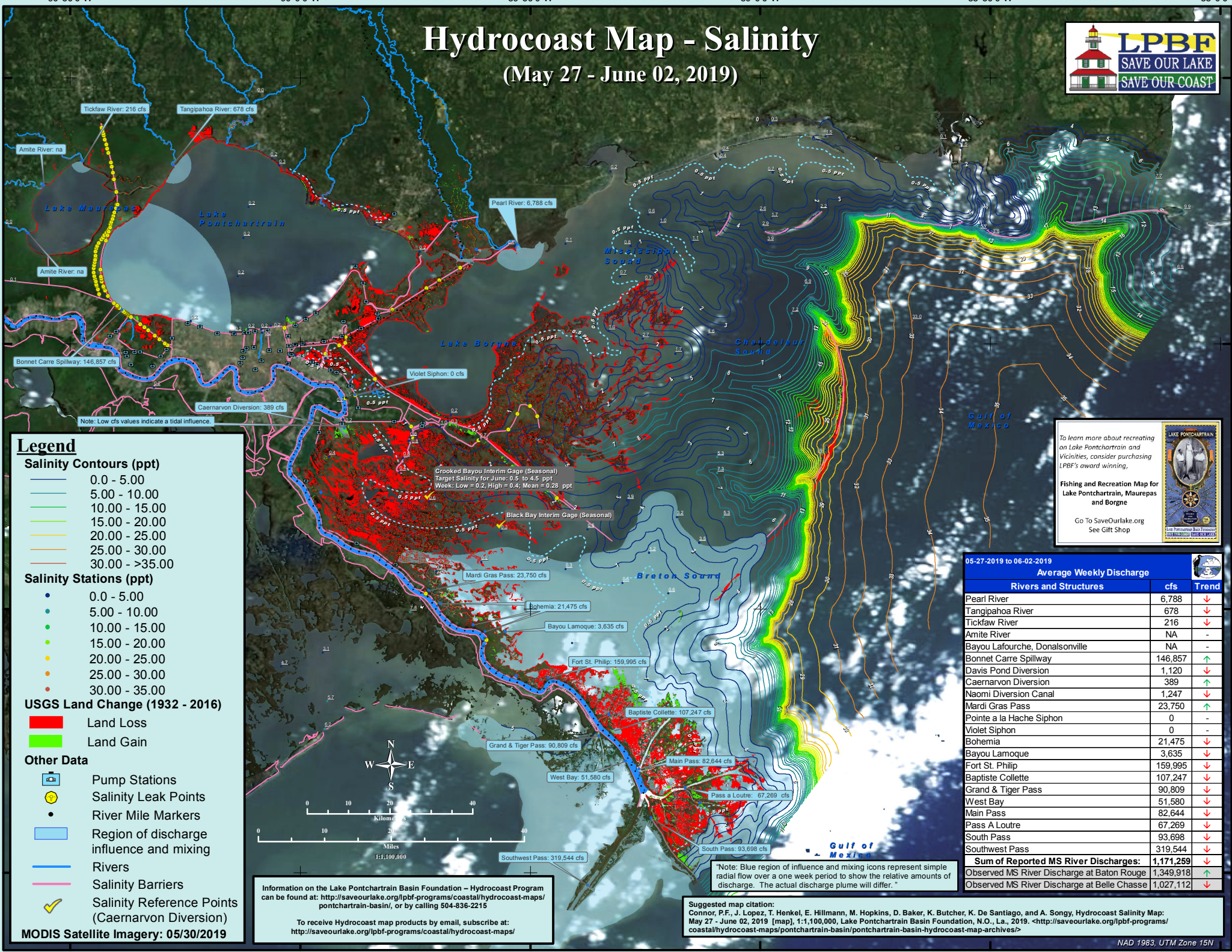


Hydrocoast Map - Salinity

(May 27 - June 02, 2019)



Legend

Salinity Contours (ppt)

- 0.0 - 5.00
- 5.00 - 10.00
- 10.00 - 15.00
- 15.00 - 20.00
- 20.00 - 25.00
- 25.00 - 30.00
- 30.00 - >35.00

Salinity Stations (ppt)

- 0.0 - 5.00
- 5.00 - 10.00
- 10.00 - 15.00
- 15.00 - 20.00
- 20.00 - 25.00
- 25.00 - 30.00
- 30.00 - 35.00

USGS Land Change (1932 - 2016)

- Land Loss
- Land Gain

Other Data

- Pump Stations
- Salinity Leak Points
- River Mile Markers
- Region of discharge influence and mixing
- Rivers
- Salinity Barriers
- Salinity Reference Points (Caernarvon Diversion)

MODIS Satellite Imagery: 05/30/2019

Crooked Bayou Interim Gage (Seasonal)
Target Salinity for June: 0.5 to 4.5 ppt
Weekly Low = 0.2, High = 0.4, Mean = 0.28 ppt

Black Bay Interim Gage (Seasonal)

Mardi Gras Pass: 23,750 cfs

Bohemia: 21,475 cfs

Bayou Lamoque: 3,635 cfs

Fort St. Philip: 159,995 cfs

Baptiste Collette: 107,247 cfs

Grand & Tiger Pass: 90,809 cfs

West Bay: 51,580 cfs

Main Pass: 82,644 cfs

Pass a Loutre: 67,269 cfs

South Pass: 93,698 cfs

Southwest Pass: 319,544 cfs

Caernarvon Diversion: 389 cfs

Violet Siphon: 0 cfs

Amite River: na

Amite River: na

Tickfaw River: 216 cfs

Tangipahoa River: 678 cfs

Bonnet Carre Spillway: 146,857 cfs

Note: Low cfs values indicate a tidal influence.

Information on the Lake Pontchartrain Basin Foundation – Hydrocoast Program can be found at: <http://saveourlake.org/lpbf-programs/coastal/hydrocoast-maps/pontchartrain-basin/>, or by calling 504-836-2215

To receive Hydrocoast map products by email, subscribe at: <http://saveourlake.org/lpbf-programs/coastal/hydrocoast-maps/>

Note: Blue region of influence and mixing icons represent simple radial flow over a one week period to show the relative amounts of discharge. The actual discharge plume will differ.

Suggested map citation:
Connor, P.F., J. Lopez, T. Henkel, E. Hillmann, M. Hopkins, D. Baker, K. Butcher, K. De Santiago, and A. Songy, Hydrocoast Salinity Map: May 27 - June 02, 2019 [map], 1:1,100,000, Lake Pontchartrain Basin Foundation, N.O., La., 2019. <<http://saveourlake.org/lpbf-programs/coastal/hydrocoast-maps/pontchartrain-basin/pontchartrain-basin-hydrocoast-map-archives/>>

To learn more about recreating on Lake Pontchartrain and Vicinities, consider purchasing LPBF's award winning,

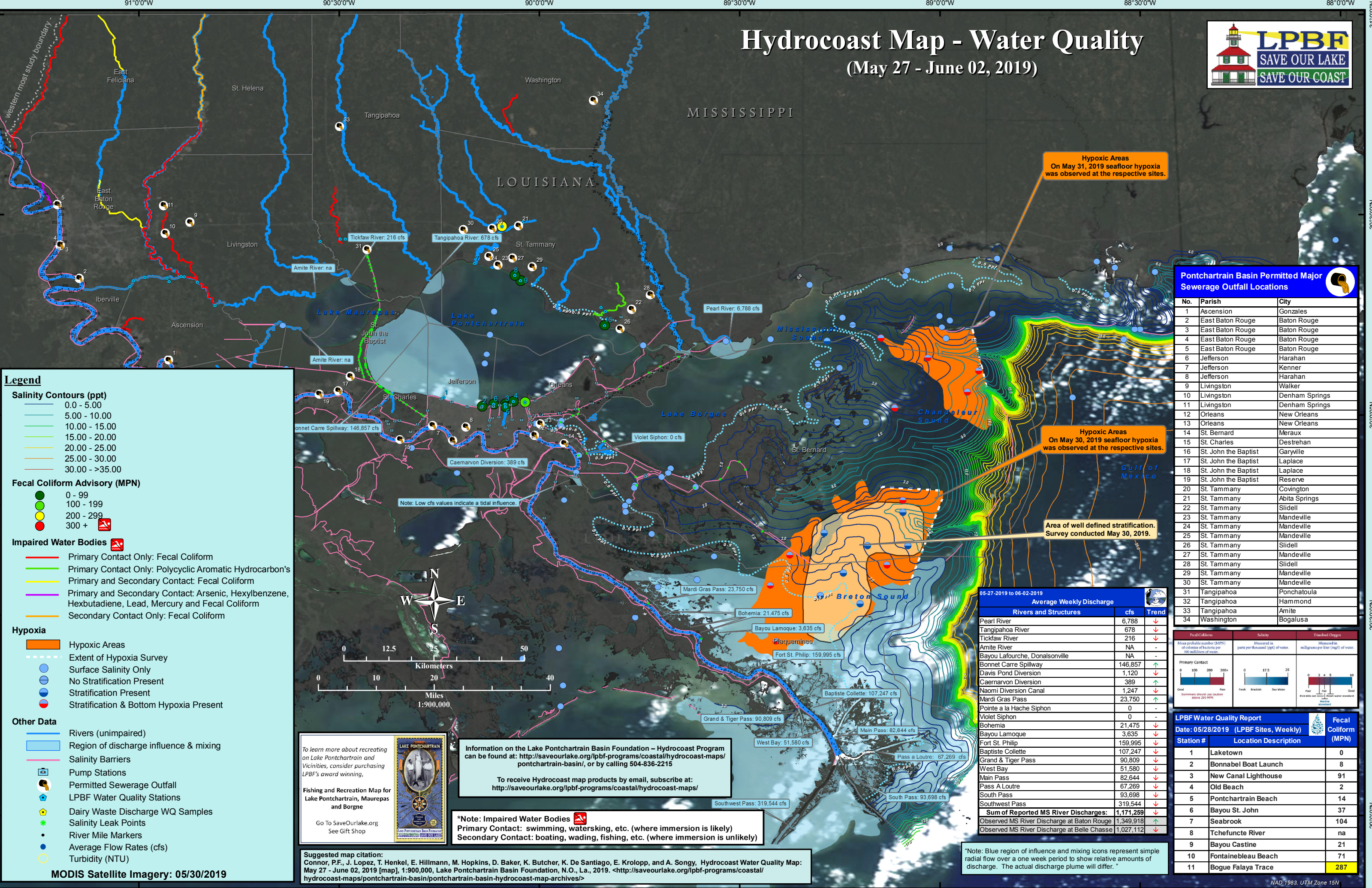
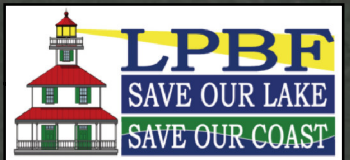
Fishing and Recreation Map for Lake Pontchartrain, Maurepas and Borgne

Go To SaveOurLake.org
See Gift Shop

05-27-2019 to 06-02-2019		
Average Weekly Discharge		
Rivers and Structures	cfs	Trend
Pearl River	6,788	↓
Tangipahoa River	678	↓
Tickfaw River	216	↓
Amite River	NA	-
Bayou Lafourche, Donaldsonville	NA	-
Bonnet Carre Spillway	146,857	↑
Davis Pond Diversion	1,120	↓
Caernarvon Diversion	389	↑
Naomi Diversion Canal	1,247	↓
Mardi Gras Pass	23,750	↑
Pointe a la Hache Siphon	0	-
Violet Siphon	0	-
Bohemia	21,475	↓
Bayou Lamoque	3,635	↓
Fort St. Philip	159,995	↓
Baptiste Collette	107,247	↓
Grand & Tiger Pass	90,809	↓
West Bay	51,580	↓
Main Pass	82,644	↓
Pass A Loutre	67,269	↓
South Pass	93,698	↓
Southwest Pass	319,544	↓
Sum of Reported MS River Discharges:	1,171,259	↓
Observed MS River Discharge at Baton Rouge	1,349,918	↑
Observed MS River Discharge at Belle Chasse	1,027,112	↓

Hydrocoast Map - Water Quality

(May 27 - June 02, 2019)



Legend

Salinity Contours (ppt)

- 0.0 - 5.00
- 5.00 - 10.00
- 10.00 - 15.00
- 15.00 - 20.00
- 20.00 - 25.00
- 25.00 - 30.00
- 30.00 - >35.00

Fecal Coliform Advisory (MPN)

- 0 - 99
- 100 - 199
- 200 - 299
- 300 +

Impaired Water Bodies

- Primary Contact Only: Fecal Coliform
- Primary Contact Only: Polycyclic Aromatic Hydrocarbon's
- Primary and Secondary Contact: Fecal Coliform
- Primary and Secondary Contact: Arsenic, Hexylbenzene, Hexbutadiene, Lead, Mercury and Fecal Coliform
- Secondary Contact Only: Fecal Coliform

Hypoxia

- Hypoxic Areas
- Extent of Hypoxia Survey
- Surface Salinity Only
- No Stratification Present
- Stratification Present
- Stratification & Bottom Hypoxia Present

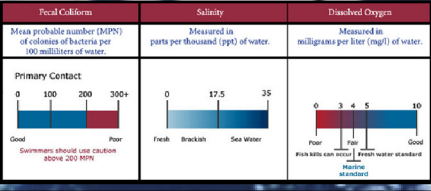
Other Data

- Rivers (unimpaired)
- Region of discharge influence & mixing
- Salinity Barriers
- Pump Stations
- Permitted Sewerage Outfall
- LPBF Water Quality Stations
- Dairy Waste Discharge WQ Samples
- Salinity Leak Points
- River Mile Markers
- Average Flow Rates (cfs)
- Turbidity (NTU)

Pontchartrain Basin Permitted Major Sewerage Outfall Locations

No.	Parish	City
1	Ascension	Gonzales
2	East Baton Rouge	Baton Rouge
3	East Baton Rouge	Baton Rouge
4	East Baton Rouge	Baton Rouge
5	East Baton Rouge	Baton Rouge
6	Jefferson	Harahan
7	Jefferson	Kenner
8	Jefferson	Harahan
9	Livingston	Walker
10	Livingston	Denham Springs
11	Livingston	Denham Springs
12	Orleans	New Orleans
13	Orleans	New Orleans
14	St. Bernard	Meraux
15	St. Charles	Destrehan
16	St. John the Baptist	Garyville
17	St. John the Baptist	Laplace
18	St. John the Baptist	Laplace
19	St. John the Baptist	Reserve
20	St. Tammany	Covington
21	St. Tammany	Abita Springs
22	St. Tammany	Slidell
23	St. Tammany	Mandeville
24	St. Tammany	Mandeville
25	St. Tammany	Mandeville
26	St. Tammany	Slidell
27	St. Tammany	Mandeville
28	St. Tammany	Slidell
29	St. Tammany	Mandeville
30	St. Tammany	Mandeville
31	Tangipahoa	Ponchatoula
32	Tangipahoa	Hammond
33	Tangipahoa	Amite
34	Washington	Bogalusa

Average Weekly Discharge		
Rivers and Structures	cfs	Trend
Pearl River	6,788	↓
Tangipahoa River	678	↓
Tickfaw River	216	↓
Amite River	NA	-
Bayou Lafourche, Donaldsonville	NA	-
Bonnet Carre Spillway	146,857	↑
Davis Pond Diversion	1,120	↓
Caernarvon Diversion	389	↑
Naomi Diversion Canal	1,247	↓
Mardi Gras Pass	23,750	↑
Pointe a la Hache Siphon	0	-
Violet Siphon	0	-
Bohemia	21,475	↓
Bayou Lamoque	3,635	↓
Fort St. Philip	159,995	↓
Baptiste Collette	107,247	↓
Grand & Tiger Pass	90,809	↓
West Bay	51,580	↓
Main Pass	82,644	↓
Pass A Loutre	67,269	↓
South Pass	93,698	↓
Southwest Pass	319,544	↓
Sum of Reported MS River Discharges:	1,171,259	
Observed MS River Discharge at Baton Rouge	1,349,918	↑
Observed MS River Discharge at Belle Chasse	1,027,112	↓



Station #	Location Description	Fecal Coliform (MPN)
1	Laketown	0
2	Bonnabel Boat Launch	8
3	New Canal Lighthouse	91
4	Old Beach	2
5	Pontchartrain Beach	14
6	Bayou St. John	37
7	Seabrook	104
8	Tchefuncte River	na
9	Bayou Castine	21
10	Fontainebleau Beach	71
11	Bogue Falaya Trace	287



Information on the Lake Pontchartrain Basin Foundation - Hydrocoast Program can be found at: <http://saveourlake.org/lpbf-programs/coastal/hydrocoast-maps/pontchartrain-basin/>, or by calling 504-836-2215

To receive Hydrocoast map products by email, subscribe at: <http://saveourlake.org/lpbf-programs/coastal/hydrocoast-maps/>

***Note: Impaired Water Bodies**
 Primary Contact: swimming, waterskiing, etc. (where immersion is likely)
 Secondary Contact: boating, wading, fishing, etc. (where immersion is unlikely)

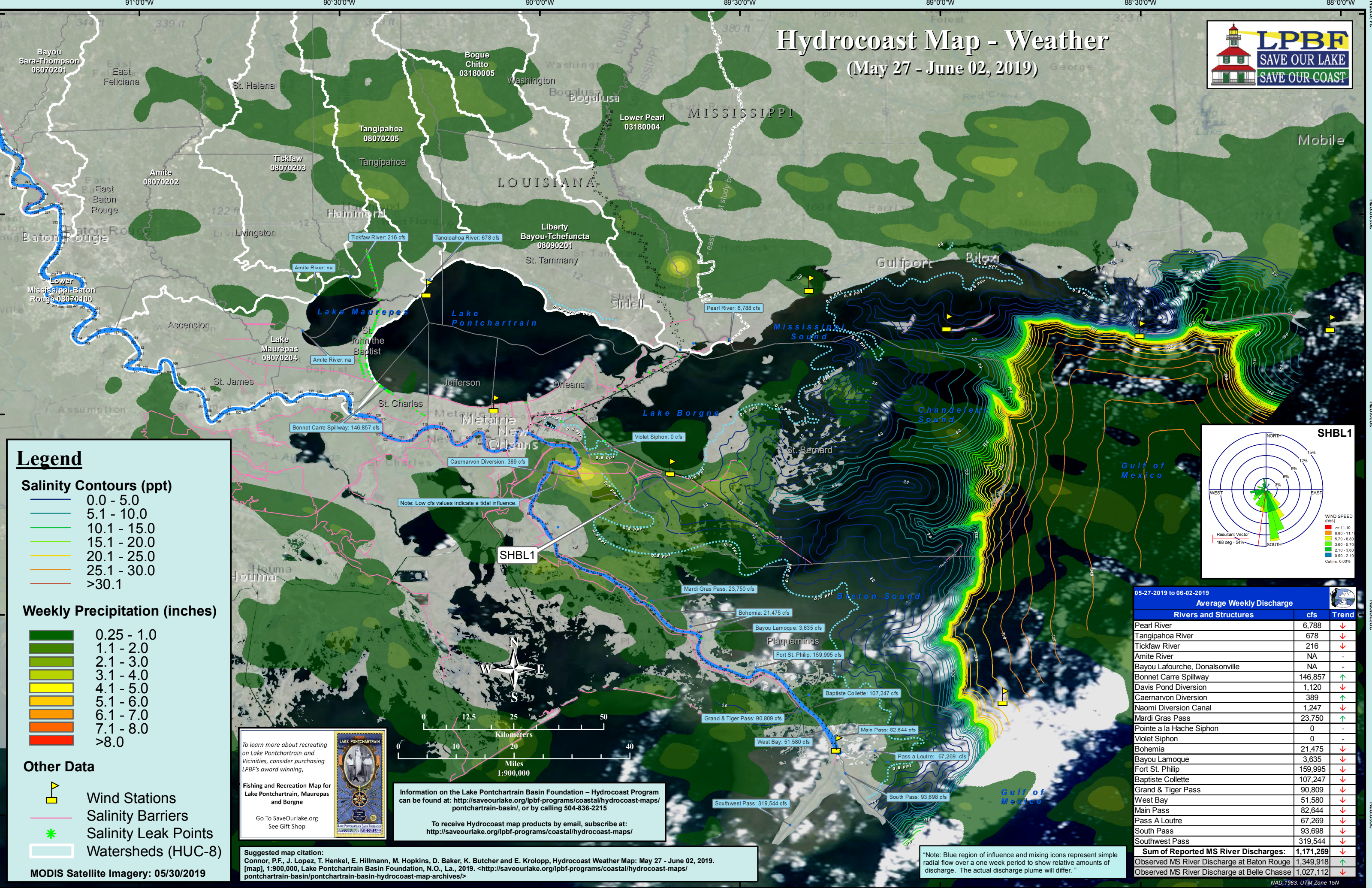
Suggested map citation:
 Connor, P.F., J. Lopez, T. Henkel, E. Hillmann, M. Hopkins, D. Baker, K. Butcher, K. De Santiago, E. Krolopp, and A. Songy, Hydrocoast Water Quality Map: May 27 - June 02, 2019 [map], 1:900,000, Lake Pontchartrain Basin Foundation, N.O., La., 2019. <<http://saveourlake.org/lpbf-programs/coastal/hydrocoast-maps/pontchartrain-basin/pontchartrain-basin-hydrocoast-map-archives/>>

*Note: Blue region of influence and mixing icons represent simple radial flow over a one week period to show relative amounts of discharge. The actual discharge plume will differ.

MODIS Satellite Imagery: 05/30/2019

Hydrocoast Map - Weather

(May 27 - June 02, 2019)



Legend

Salinity Contours (ppt)

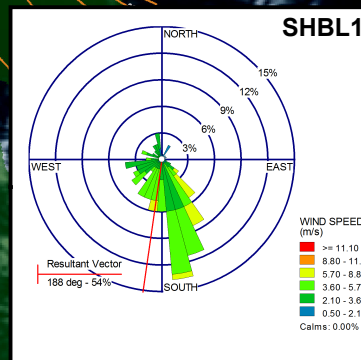
- 0.0 - 5.0
- 5.1 - 10.0
- 10.1 - 15.0
- 15.1 - 20.0
- 20.1 - 25.0
- 25.1 - 30.0
- >30.1

Weekly Precipitation (inches)

- 0.25 - 1.0
- 1.1 - 2.0
- 2.1 - 3.0
- 3.1 - 4.0
- 4.1 - 5.0
- 5.1 - 6.0
- 6.1 - 7.0
- 7.1 - 8.0
- >8.0

Other Data

- Wind Stations
- Salinity Barriers
- Salinity Leak Points
- Watersheds (HUC-8)



05-27-2019 to 06-02-2019

Rivers and Structures	cfs	Trend
Pearl River	6,788	↓
Tangipahoa River	678	↓
Tickfaw River	216	↓
Amite River	NA	-
Bayou Lafourche, Donalsonville	NA	-
Bonnet Carre Spillway	146,857	↑
Davis Pond Diversion	1,120	↓
Caernarvon Diversion	389	↑
Naomi Diversion Canal	1,247	↓
Mardi Gras Pass	23,750	↑
Pointe a la Hache Siphon	0	-
Violet Siphon	0	-
Bohemia	21,475	↓
Bayou Lamoque	3,635	↓
Fort St. Philip	159,995	↓
Baptiste Collette	107,247	↓
Grand & Tiger Pass	90,809	↓
West Bay	51,580	↓
Main Pass	82,644	↓
Pass A Loutre	67,269	↓
South Pass	93,698	↓
Southwest Pass	319,544	↓
Sum of Reported MS River Discharges:	1,171,259	↓
Observed MS River Discharge at Baton Rouge	1,349,918	↑
Observed MS River Discharge at Belle Chasse	1,027,112	↓

To learn more about recreating on Lake Pontchartrain and Vicinities, consider purchasing LPBF's award winning, **Fishing and Recreation Map for Lake Pontchartrain, Maurepas and Borgne**

Go To SaveOurLake.org See Gift Shop

Information on the Lake Pontchartrain Basin Foundation - Hydrocoast Program can be found at: <http://saveourlake.org/lpbf-programs/coastal/hydrocoast-maps/pontchartrain-basin/>, or by calling 504-836-2215

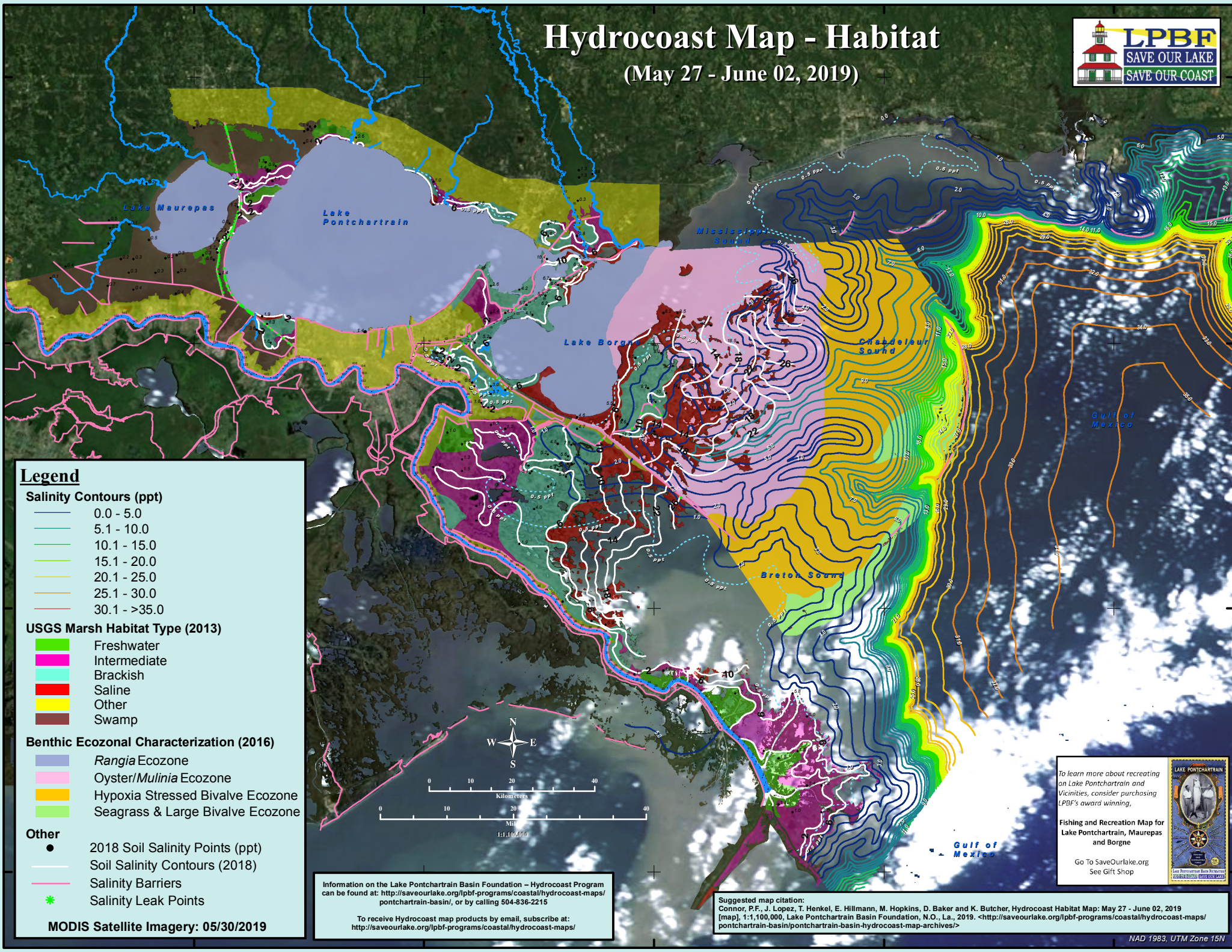
To receive Hydrocoast map products by email, subscribe at: <http://saveourlake.org/lpbf-programs/coastal/hydrocoast-maps/>

Suggested map citation:
 Connor, P.F., J. Lopez, T. Henkel, E. Hillmann, M. Hopkins, D. Baker, K. Butcher and E. Krolopp, Hydrocoast Weather Map: May 27 - June 02, 2019. [map], 1:900,000, Lake Pontchartrain Basin Foundation, N.O., La., 2019. <<http://saveourlake.org/lpbf-programs/coastal/hydrocoast-maps/pontchartrain-basin/pontchartrain-basin-hydrocoast-map-archives/>>

Note: Blue region of influence and mixing icons represent simple radial flow over a one week period to show relative amounts of discharge. The actual discharge plume will differ.

Hydrocoast Map - Habitat

(May 27 - June 02, 2019)



Legend

Salinity Contours (ppt)

- 0.0 - 5.0
- 5.1 - 10.0
- 10.1 - 15.0
- 15.1 - 20.0
- 20.1 - 25.0
- 25.1 - 30.0
- 30.1 - >35.0

USGS Marsh Habitat Type (2013)

- Freshwater
- Intermediate
- Brackish
- Saline
- Other
- Swamp

Benthic Ecozonal Characterization (2016)

- Rangia Ecozone
- Oyster/Mulinia Ecozone
- Hypoxia Stressed Bivalve Ecozone
- Seagrass & Large Bivalve Ecozone

Other

- 2018 Soil Salinity Points (ppt)
- Soil Salinity Contours (2018)
- Salinity Barriers
- Salinity Leak Points

MODIS Satellite Imagery: 05/30/2019



Information on the Lake Pontchartrain Basin Foundation - Hydrocoast Program can be found at: <http://saveourlake.org/lpbf-programs/coastal/hydrocoast-maps/pontchartrain-basin/>, or by calling 504-836-2215

To receive Hydrocoast map products by email, subscribe at: <http://saveourlake.org/lpbf-programs/coastal/hydrocoast-maps/>

Suggested map citation:
Connor, P.F., J. Lopez, T. Henkel, E. Hillmann, M. Hopkins, D. Baker and K. Butcher, Hydrocoast Habitat Map: May 27 - June 02, 2019 [map], 1:1,100,000, Lake Pontchartrain Basin Foundation, N.O., La., 2019. <<http://saveourlake.org/lpbf-programs/coastal/hydrocoast-maps/pontchartrain-basin/pontchartrain-basin-hydrocoast-map-archives/>>

To learn more about recreating on Lake Pontchartrain and Vicinities, consider purchasing LPBF's award winning, Fishing and Recreation Map for Lake Pontchartrain, Maurepas and Borgne

Go To SaveOurLake.org
See Gift Shop

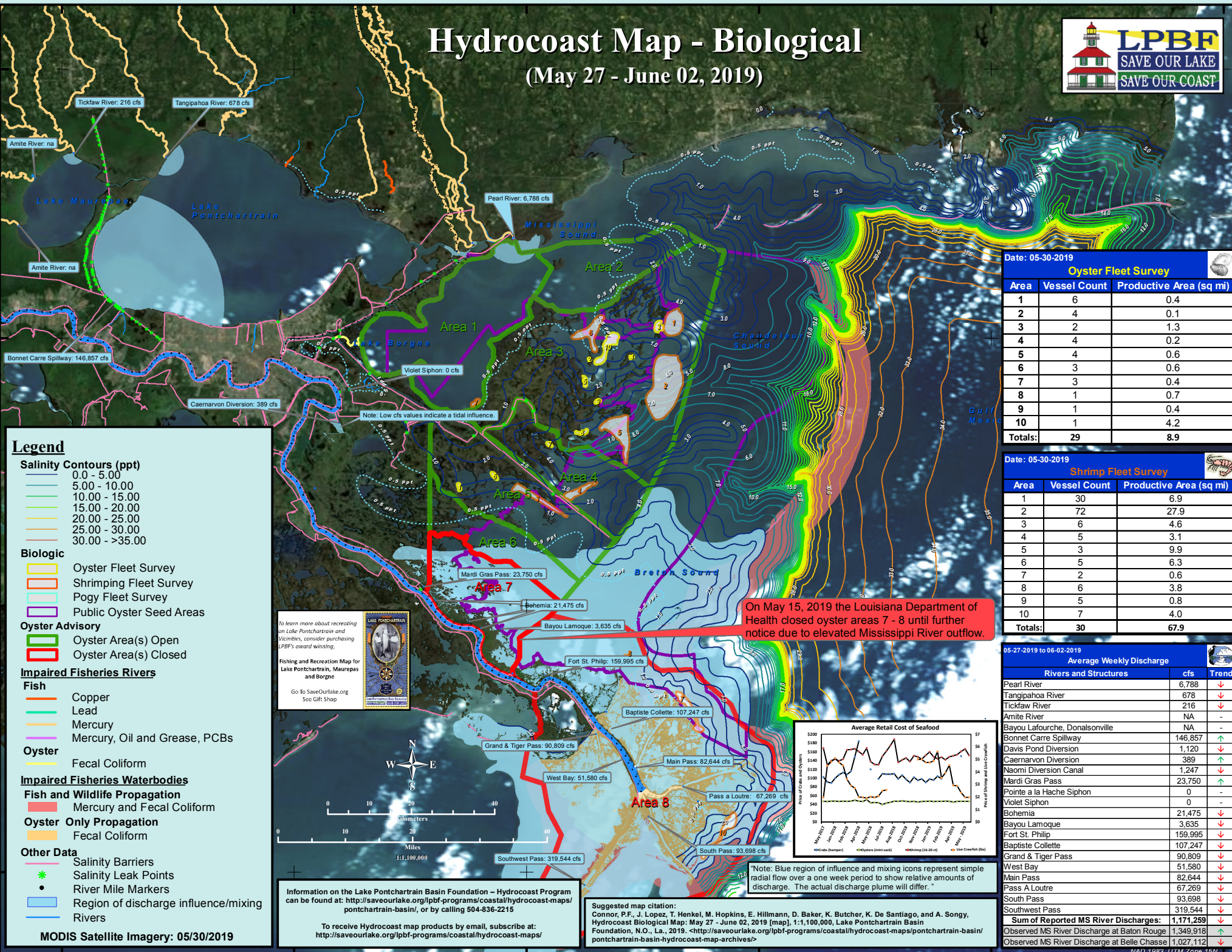


30°30'00"N
30°0'00"N
29°30'00"N
29°0'00"N

90°30'00"W
90°0'00"W
89°30'00"W
89°0'00"W
88°30'00"W

Hydrocoast Map - Biological

(May 27 - June 02, 2019)



Legend

Salinity Contours (ppt)

- 0.0 - 5.00
- 5.00 - 10.00
- 10.00 - 15.00
- 15.00 - 20.00
- 20.00 - 25.00
- 25.00 - 30.00
- 30.00 - >35.00

Biologic

- Oyster Fleet Survey
- Shrimping Fleet Survey
- Pogy Fleet Survey
- Public Oyster Seed Areas

Oyster Advisory

- Oyster Area(s) Open
- Oyster Area(s) Closed

Impaired Fisheries Rivers

Fish

- Copper
- Lead
- Mercury
- Mercury, Oil and Grease, PCBs

Oyster

- Fecal Coliform

Impaired Fisheries Waterbodies

Fish and Wildlife Propagation

- Mercury and Fecal Coliform

Oyster Only Propagation

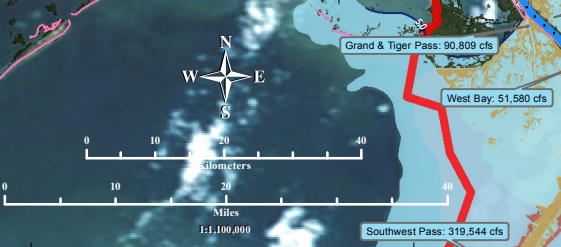
- Fecal Coliform

Other Data

- Salinity Barriers
- Salinity Leak Points
- River Mile Markers
- Region of discharge influence/mixing
- Rivers

To learn more about recreating in Lake Pontchartrain and Vicinities, consider purchasing LPBF's award winning, Fishing and Recreation Map for Lake Pontchartrain, Maurepas and Borgne.

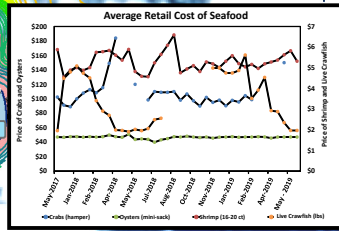
Go To SaveOurLake.org See Gift-Shop



Information on the Lake Pontchartrain Basin Foundation – Hydrocoast Program can be found at: <http://saveourlake.org/lpbf-programs/coastal/hydrocoast-maps/pontchartrain-basin/>, or by calling 504-836-2215

To receive Hydrocoast map products by email, subscribe at: <http://saveourlake.org/lpbf-programs/coastal/hydrocoast-maps/>

Suggested map citation:
 Connor, P.F., J. Lopez, T. Henkel, M. Hopkins, E. Hillmann, D. Baker, K. Butcher, K. De Santiago, and A. Songy, Hydrocoast Biological Map: May 27 - June 02, 2019 [map]. 1:1,100,000, Lake Pontchartrain Basin Foundation, N.O., La., 2019. <<http://saveourlake.org/lpbf-programs/coastal/hydrocoast-maps/pontchartrain-basin/pontchartrain-basin-hydrocoast-map-archives/>>



On May 15, 2019 the Louisiana Department of Health closed oyster areas 7 - 8 until further notice due to elevated Mississippi River outflow.

Date: 05-30-2019

Oyster Fleet Survey

Area	Vessel Count	Productive Area (sq mi)
1	6	0.4
2	4	0.1
3	2	1.3
4	4	0.2
5	4	0.6
6	3	0.6
7	3	0.4
8	1	0.7
9	1	0.4
10	1	4.2
Totals:	29	8.9

Date: 05-30-2019

Shrimp Fleet Survey

Area	Vessel Count	Productive Area (sq mi)
1	30	6.9
2	72	27.9
3	6	4.6
4	5	3.1
5	3	9.9
6	5	6.3
7	2	0.6
8	6	3.8
9	5	0.8
10	7	4.0
Totals:	30	67.9

05-27-2019 to 06-02-2019

Average Weekly Discharge

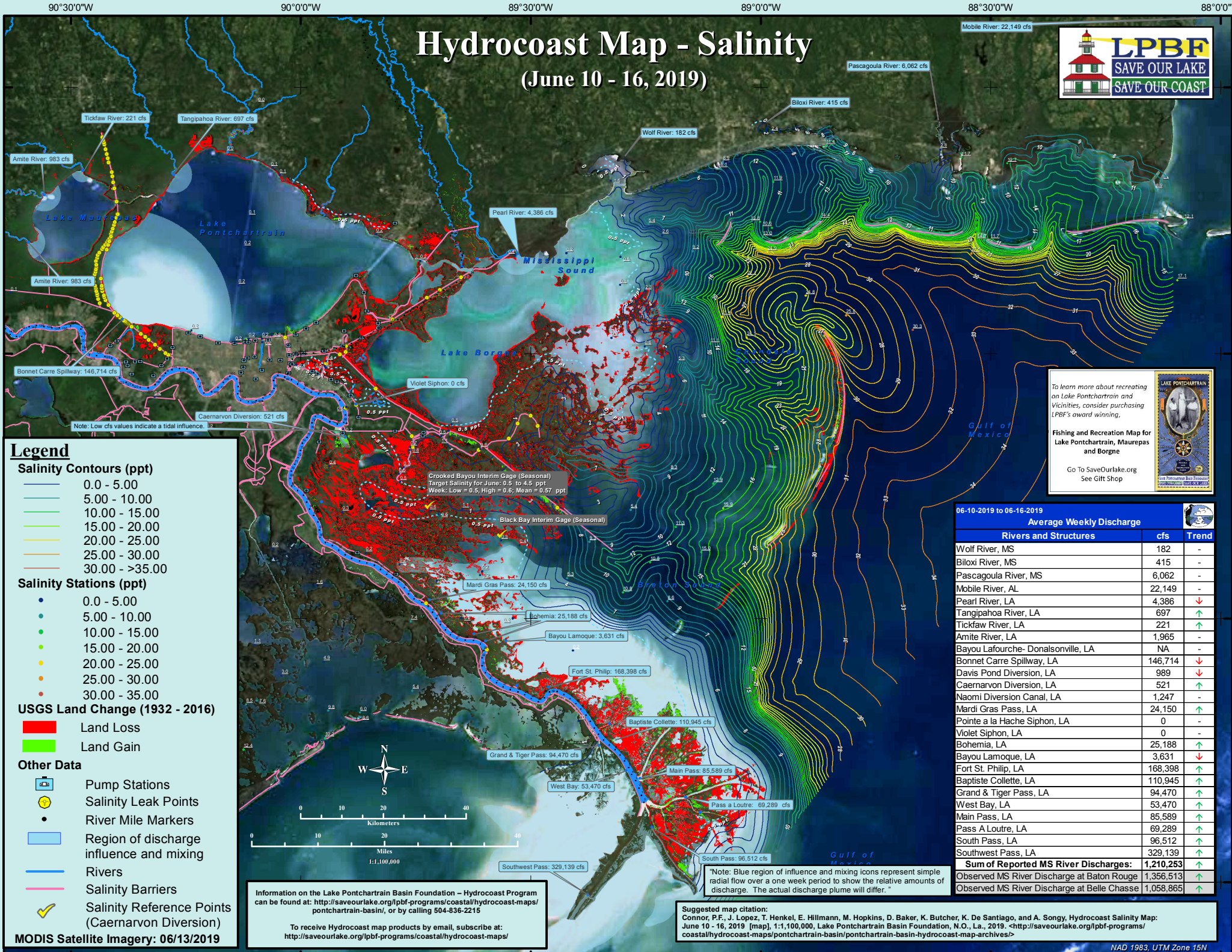
Rivers and Structures	cfs	Trend
Pearl River	6,788	↓
Tangipahoa River	678	↓
Tickfaw River	216	↓
Amite River	NA	-
Bayou Lafourche, Donaldsonville	NA	-
Bonnet Carre Spillway	146,857	↑
Davis Pond Diversion	1,120	↓
Caernarvon Diversion	389	↑
Naomi Diversion Canal	1,247	↓
Mardi Gras Pass	23,750	↑
Pointe a la Hache Siphon	0	-
Violet Siphon	0	-
Bohemia	21,475	↓
Bayou Lamoque	3,635	↓
Fort St. Philip	159,995	↓
Baptiste Collette	107,247	↓
Grand & Tiger Pass	90,809	↓
West Bay	51,580	↓
Main Pass	82,644	↓
Pass a Loure	67,269	↓
South Pass	93,698	↓
Southwest Pass	319,544	↓
Sum of Reported MS River Discharges:	1,171,259	
Observed MS River Discharge at Baton Rouge	1,349,918	↑
Observed MS River Discharge at Belle Chasse	1,027,112	↓

Observed MS River Discharge at Belle Chasse 1,027,112

NAD_1983_UTM_Zone_15N

Hydrocoast Map - Salinity

(June 10 - 16, 2019)



Legend

Salinity Contours (ppt)

- 0.0 - 5.00
- 5.00 - 10.00
- 10.00 - 15.00
- 15.00 - 20.00
- 20.00 - 25.00
- 25.00 - 30.00
- 30.00 - >35.00

Salinity Stations (ppt)

- 0.0 - 5.00
- 5.00 - 10.00
- 10.00 - 15.00
- 15.00 - 20.00
- 20.00 - 25.00
- 25.00 - 30.00
- 30.00 - 35.00

USGS Land Change (1932 - 2016)

- Land Loss
- Land Gain

Other Data

- Pump Stations
- Salinity Leak Points
- River Mile Markers
- Region of discharge influence and mixing
- Rivers
- Salinity Barriers
- Salinity Reference Points (Caernarvon Diversion)

MODIS Satellite Imagery: 06/13/2019

Information on the Lake Pontchartrain Basin Foundation – Hydrocoast Program can be found at: <http://saveourlake.org/lpbf-programs/coastal/hydrocoast-maps/pontchartrain-basin/>, or by calling 504-836-2215

To receive Hydrocoast map products by email, subscribe at: <http://saveourlake.org/lpbf-programs/coastal/hydrocoast-maps/>

Suggested map citation:
 Connor, P.F., J. Lopez, T. Henkel, E. Hillmann, M. Hopkins, D. Baker, K. Butcher, K. De Santiago, and A. Songy, Hydrocoast Salinity Map: June 10 - 16, 2019 [map], 1:1,100,000, Lake Pontchartrain Basin Foundation, N.O., La., 2019. <<http://saveourlake.org/lpbf-programs/coastal/hydrocoast-maps/pontchartrain-basin/pontchartrain-basin-hydrocoast-map-archives/>>

To learn more about recreating on Lake Pontchartrain and Vicinities, consider purchasing LPBF's award winning, Fishing and Recreation Map for Lake Pontchartrain, Maurepas and Borgne

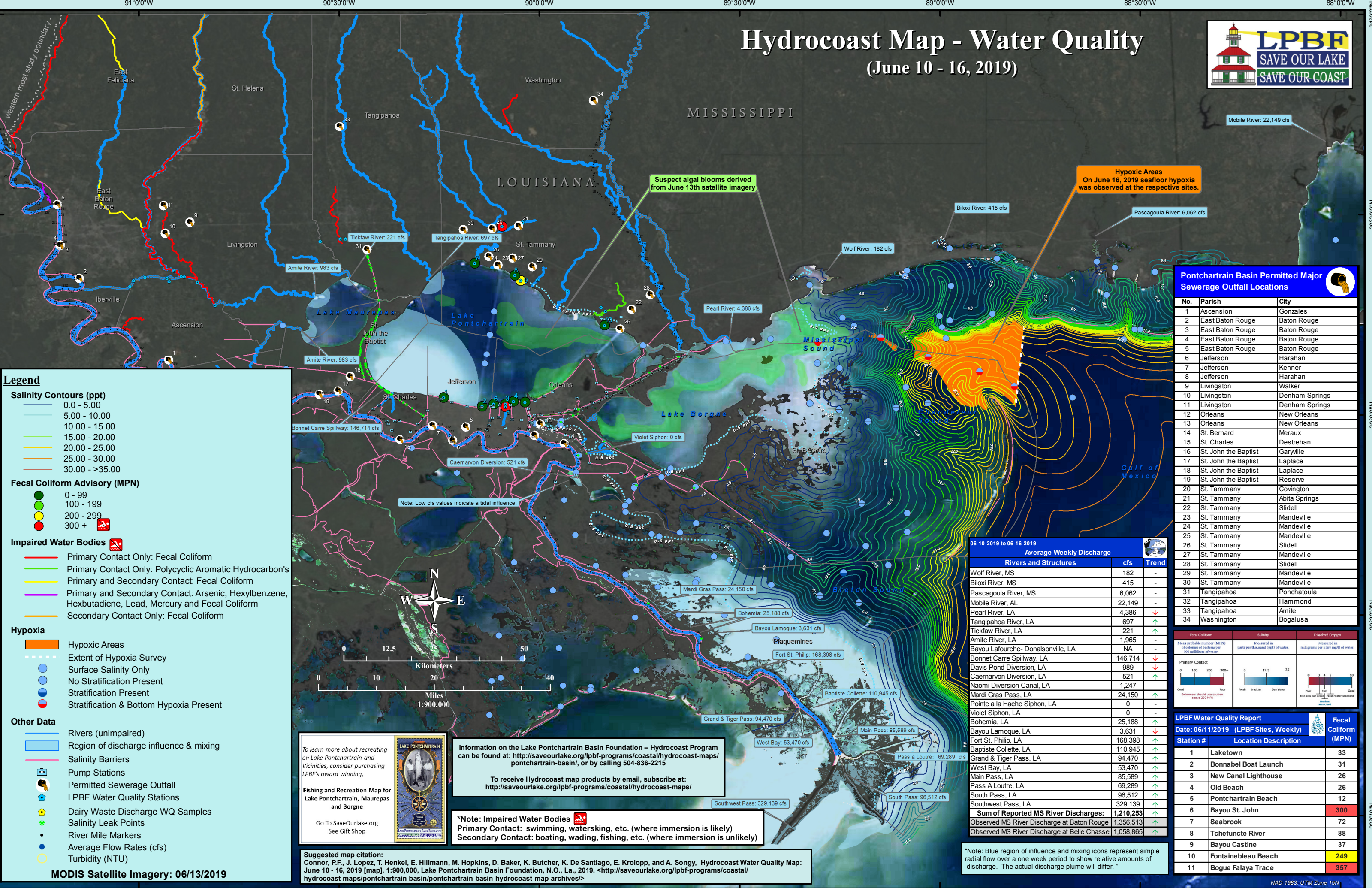
Go To SaveOurLake.org
 See Gift Shop

06-10-2019 to 06-16-2019			
Average Weekly Discharge			
Rivers and Structures	cfs	Trend	
Wolf River, MS	182	-	
Biloxi River, MS	415	-	
Pascagoula River, MS	6,062	-	
Mobile River, AL	22,149	-	
Pearl River, LA	4,386	↓	
Tangipahoa River, LA	697	↑	
Tickfaw River, LA	221	↑	
Amite River, LA	1,965	-	
Bayou Lafourche- Donalsonville, LA	NA	-	
Bonnet Carre Spillway, LA	146,714	↓	
Davis Pond Diversion, LA	989	↓	
Caernarvon Diversion, LA	521	↑	
Naomi Diversion Canal, LA	1,247	-	
Mardi Gras Pass, LA	24,150	↑	
Pointe a la Hache Siphon, LA	0	-	
Violet Siphon, LA	0	-	
Bohemia, LA	25,188	↓	
Bayou Lamoque, LA	3,631	↑	
Fort St. Philip, LA	168,398	↑	
Baptiste Collette, LA	110,945	↑	
Grand & Tiger Pass, LA	94,470	↑	
West Bay, LA	53,470	↑	
Main Pass, LA	85,589	↑	
Pass A Loutre, LA	69,289	↑	
South Pass, LA	96,512	↑	
Southwest Pass, LA	329,139	↑	
Sum of Reported MS River Discharges:	1,210,253	↑	
Observed MS River Discharge at Baton Rouge	1,356,513	↑	
Observed MS River Discharge at Belle Chasse	1,058,865	↑	

Note: Blue region of influence and mixing icons represent simple radial flow over a one week period to show the relative amounts of discharge. The actual discharge plume will differ.

Hydrocoast Map - Water Quality

(June 10 - 16, 2019)



Legend

Salinity Contours (ppt)

- 0.0 - 5.00
- 5.00 - 10.00
- 10.00 - 15.00
- 15.00 - 20.00
- 20.00 - 25.00
- 25.00 - 30.00
- 30.00 - >35.00

Fecal Coliform Advisory (MPN)

- 0 - 99
- 100 - 199
- 200 - 299
- 300 +

Impaired Water Bodies

- Primary Contact Only: Fecal Coliform
- Primary Contact Only: Polycyclic Aromatic Hydrocarbon's
- Primary and Secondary Contact: Fecal Coliform
- Primary and Secondary Contact: Arsenic, Hexylbenzene, Hexbutadiene, Lead, Mercury and Fecal Coliform
- Secondary Contact Only: Fecal Coliform

Hypoxia

- Hypoxic Areas
- Extent of Hypoxia Survey
- Surface Salinity Only
- No Stratification Present
- Stratification Present
- Stratification & Bottom Hypoxia Present

Other Data

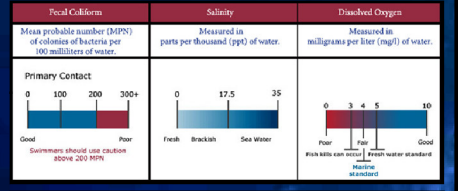
- Rivers (unimpaired)
- Region of discharge influence & mixing
- Salinity Barriers
- Pump Stations
- Permitted Sewerage Outfall
- LPBF Water Quality Stations
- Dairy Waste Discharge WQ Samples
- Salinity Leak Points
- River Mile Markers
- Average Flow Rates (cfs)
- Turbidity (NTU)

Pontchartrain Basin Permitted Major Sewerage Outfall Locations

No.	Parish	City
1	Ascension	Gonzales
2	East Baton Rouge	Baton Rouge
3	East Baton Rouge	Baton Rouge
4	East Baton Rouge	Baton Rouge
5	East Baton Rouge	Baton Rouge
6	Jefferson	Harahan
7	Jefferson	Kenner
8	Jefferson	Harahan
9	Livingston	Walker
10	Livingston	Denham Springs
11	Livingston	Denham Springs
12	Orleans	New Orleans
13	Orleans	New Orleans
14	St. Bernard	Meraux
15	St. Charles	Destrehan
16	St. John the Baptist	Garyville
17	St. John the Baptist	Laplace
18	St. John the Baptist	Laplace
19	St. John the Baptist	Reserve
20	St. Tammany	Covington
21	St. Tammany	Abita Springs
22	St. Tammany	Slidell
23	St. Tammany	Mandeville
24	St. Tammany	Mandeville
25	St. Tammany	Mandeville
26	St. Tammany	Slidell
27	St. Tammany	Mandeville
28	St. Tammany	Slidell
29	St. Tammany	Mandeville
30	St. Tammany	Mandeville
31	Tangipahoa	Ponchatoula
32	Tangipahoa	Hammond
33	Tangipahoa	Amite
34	Washington	Bogalusa

Average Weekly Discharge

Rivers and Structures	cfs	Trend
Wolf River, MS	182	-
Biloxi River, MS	415	-
Pascagoula River, MS	6,062	-
Mobile River, AL	22,149	-
Pearl River, LA	4,386	↓
Tangipahoa River, LA	697	↑
Tickfaw River, LA	221	↑
Amite River, LA	1,965	-
Bayou Lafourche- Donalsonville, LA	NA	-
Bonnet Carre Spillway, LA	146,714	↓
Davis Pond Diversion, LA	989	↓
Caernarvon Diversion, LA	521	↑
Naomi Diversion Canal, LA	1,247	-
Mardi Gras Pass, LA	24,150	↑
Pointe a la Hache Siphon, LA	0	-
Violet Siphon, LA	0	-
Bohemia, LA	25,188	↑
Bayou Lamoque, LA	3,631	↓
Fort St. Philip, LA	168,398	↑
Baptiste Collette, LA	110,945	↑
Grand & Tiger Pass, LA	94,470	↑
West Bay, LA	53,470	↑
Main Pass, LA	85,589	↑
Pass A Loutre, LA	69,289	↑
South Pass, LA	96,512	↑
Southwest Pass, LA	329,139	↑
South Pass, LA	96,512	↑
Sum of Reported MS River Discharges:	1,210,253	↑
Observed MS River Discharge at Baton Rouge	1,356,513	↑
Observed MS River Discharge at Belle Chasse	1,058,865	↑



LPBF Water Quality Report

Date: 06/11/2019 (LPBF Sites, Weekly)

Station #	Location Description	Fecal Coliform (MPN)
1	Laketown	33
2	Bonnabel Boat Launch	31
3	New Canal Lighthouse	26
4	Old Beach	26
5	Pontchartrain Beach	12
6	Bayou St. John	300
7	Seabrook	72
8	Tchefuncte River	88
9	Bayou Castine	37
10	Fontainebleau Beach	249
11	Bogue Falaya Trace	357

To learn more about recreating on Lake Pontchartrain and Vicinities, consider purchasing LPBF's award winning, Fishing and Recreation Map for Lake Pontchartrain, Maurepas and Borgne

Go To SaveOurLake.org See Gift Shop

Information on the Lake Pontchartrain Basin Foundation - Hydrocoast Program can be found at: <http://saveourlake.org/lpbf-programs/coastal/hydrocoast-maps/pontchartrain-basin/>, or by calling 504-836-2215

To receive Hydrocoast map products by email, subscribe at: <http://saveourlake.org/lpbf-programs/coastal/hydrocoast-maps/>

***Note: Impaired Water Bodies**

Primary Contact: swimming, waterskiing, etc. (where immersion is likely)

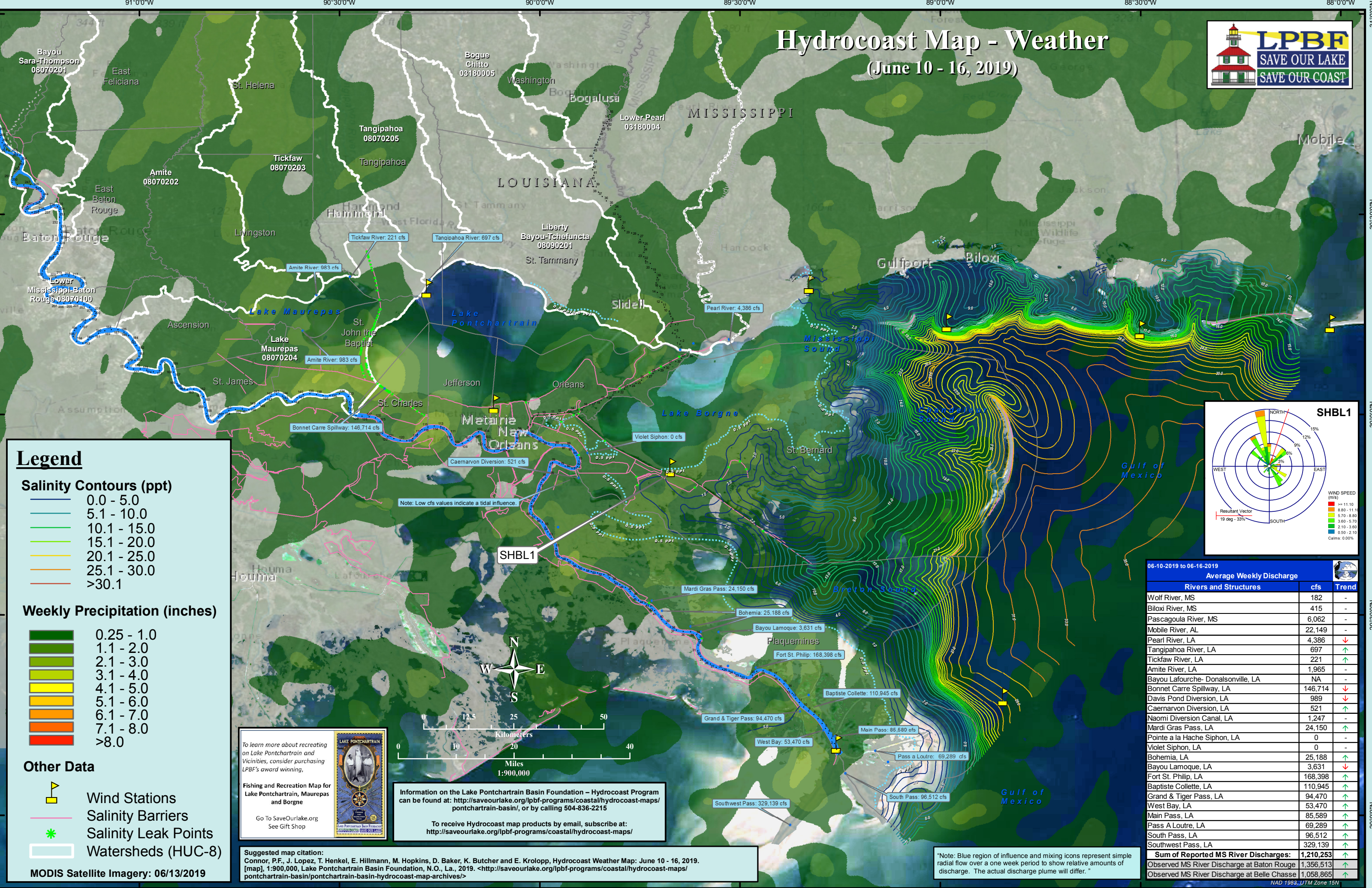
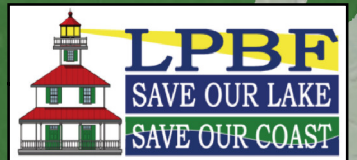
Secondary Contact: boating, wading, fishing, etc. (where immersion is unlikely)

Suggested map citation: Connor, P.F., J. Lopez, T. Henkel, E. Hillmann, M. Hopkins, D. Baker, K. Butcher, K. De Santiago, E. Krolopp, and A. Songy, Hydrocoast Water Quality Map: June 10 - 16, 2019 [map], 1:900,000, Lake Pontchartrain Basin Foundation, N.O., La., 2019. <<http://saveourlake.org/lpbf-programs/coastal/hydrocoast-maps/pontchartrain-basin/pontchartrain-basin-hydrocoast-map-archives/>>

*Note: Blue region of influence and mixing icons represent simple radial flow over a one week period to show relative amounts of discharge. The actual discharge plume will differ.

Hydrocoast Map - Weather

(June 10 - 16, 2019)



Legend

Salinity Contours (ppt)

- 0.0 - 5.0
- 5.1 - 10.0
- 10.1 - 15.0
- 15.1 - 20.0
- 20.1 - 25.0
- 25.1 - 30.0
- >30.1

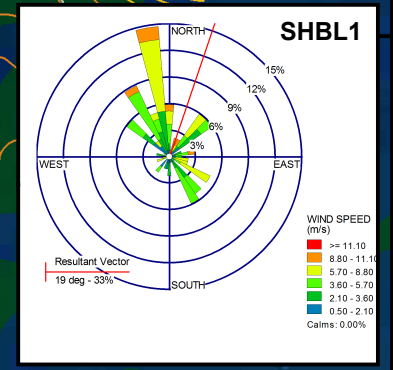
Weekly Precipitation (inches)

- 0.25 - 1.0
- 1.1 - 2.0
- 2.1 - 3.0
- 3.1 - 4.0
- 4.1 - 5.0
- 5.1 - 6.0
- 6.1 - 7.0
- 7.1 - 8.0
- >8.0

Other Data

- Wind Stations
- Salinity Barriers
- Salinity Leak Points
- Watersheds (HUC-8)

MODIS Satellite Imagery: 06/13/2019



06-10-2019 to 06-16-2019

Rivers and Structures	cfs	Trend
Wolf River, MS	182	-
Biloxi River, MS	415	-
Pascagoula River, MS	6,062	-
Mobile River, AL	22,149	-
Pearl River, LA	4,386	↓
Tangipahoa River, LA	697	↑
Tickfaw River, LA	221	↑
Amite River, LA	1,965	-
Bayou Lafourche- Donalsonville, LA	NA	-
Bonnet Carre Spillway, LA	146,714	↓
Davis Pond Diversion, LA	989	↓
Caernarvon Diversion, LA	521	↑
Naomi Diversion Canal, LA	1,247	-
Mardi Gras Pass, LA	24,150	↑
Pointe a la Hache Siphon, LA	0	-
Violet Siphon, LA	0	-
Bohemia, LA	25,188	↑
Bayou Lamoque, LA	3,631	↓
Fort St. Philip, LA	168,398	↑
Baptiste Collette, LA	110,945	↑
Grand & Tiger Pass, LA	94,470	↑
West Bay, LA	53,470	↑
Main Pass, LA	85,589	↑
Pass A Louire, LA	69,289	↑
South Pass, LA	96,512	↑
Southwest Pass, LA	329,139	↑
Sum of Reported MS River Discharges:	1,210,253	↑
Observed MS River Discharge at Baton Rouge	1,356,513	↑
Observed MS River Discharge at Belle Chasse	1,058,865	↑

Information on the Lake Pontchartrain Basin Foundation – Hydrocoast Program can be found at: <http://saveourlake.org/lpbf-programs/coastal/hydrocoast-maps/pontchartrain-basin/>, or by calling 504-836-2215

To receive Hydrocoast map products by email, subscribe at: <http://saveourlake.org/lpbf-programs/coastal/hydrocoast-maps/>

To learn more about recreating on Lake Pontchartrain and Vicinities, consider purchasing LPBF's award winning, **Fishing and Recreation Map for Lake Pontchartrain, Maurepas and Borgne**

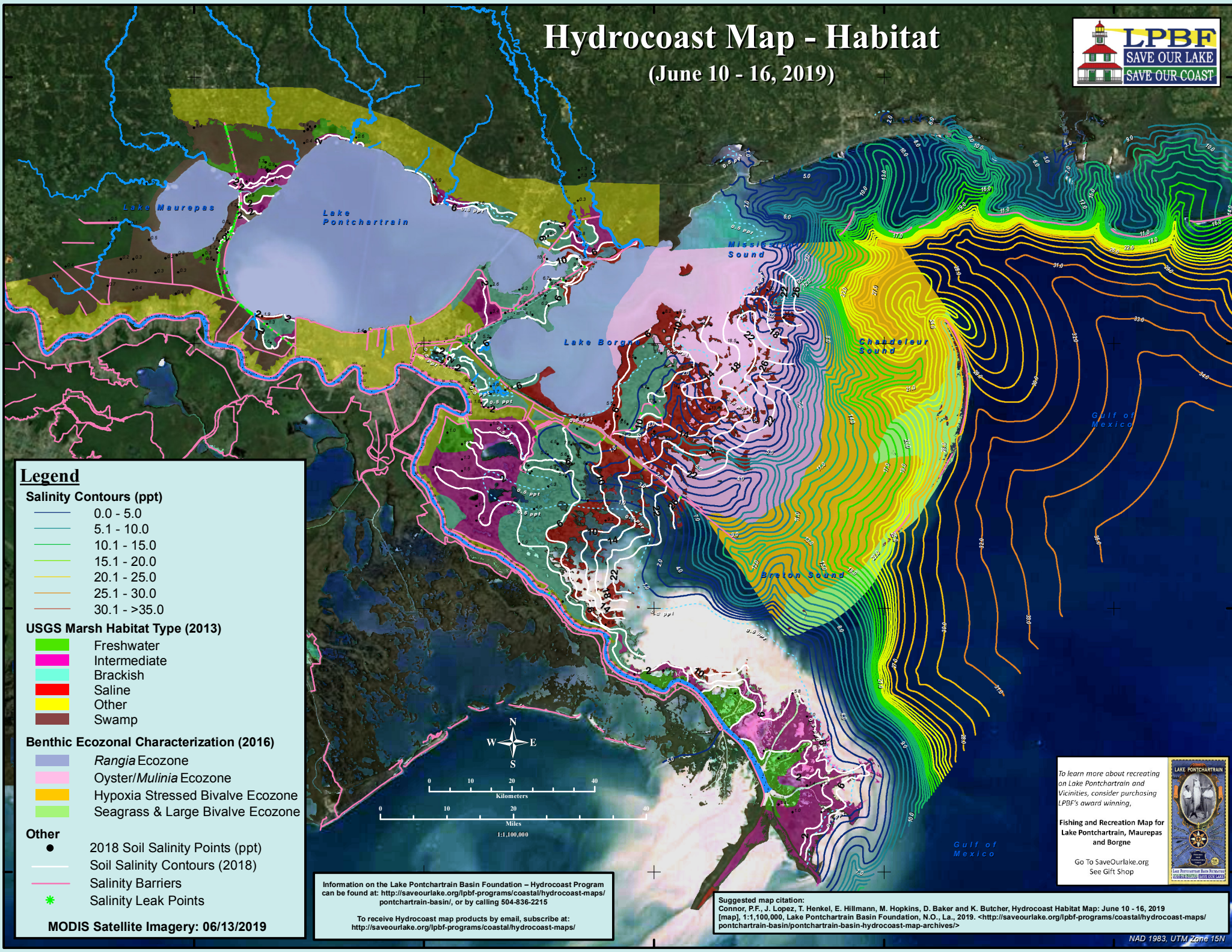
Go To SaveOurLake.org See Gift Shop

Suggested map citation:
 Connor, P.F., J. Lopez, T. Henkel, E. Hillmann, M. Hopkins, D. Baker, K. Butcher and E. Krolopp, Hydrocoast Weather Map: June 10 - 16, 2019. [map], 1:900,000, Lake Pontchartrain Basin Foundation, N.O., La., 2019. <<http://saveourlake.org/lpbf-programs/coastal/hydrocoast-maps/pontchartrain-basin/pontchartrain-basin-hydrocoast-map-archives/>>

Note: Blue region of influence and mixing icons represent simple radial flow over a one week period to show relative amounts of discharge. The actual discharge plume will differ.

Hydrocoast Map - Habitat

(June 10 - 16, 2019)



Legend

Salinity Contours (ppt)

- 0.0 - 5.0
- 5.1 - 10.0
- 10.1 - 15.0
- 15.1 - 20.0
- 20.1 - 25.0
- 25.1 - 30.0
- 30.1 - >35.0

USGS Marsh Habitat Type (2013)

- Freshwater
- Intermediate
- Brackish
- Saline
- Other
- Swamp

Benthic Ecozonal Characterization (2016)

- Rangia* Ecozone
- Oyster/*Mulinia* Ecozone
- Hypoxia Stressed Bivalve Ecozone
- Seagrass & Large Bivalve Ecozone

Other

- 2018 Soil Salinity Points (ppt)
- Soil Salinity Contours (2018)
- Salinity Barriers
- Salinity Leak Points

MODIS Satellite Imagery: 06/13/2019



Information on the Lake Pontchartrain Basin Foundation – Hydrocoast Program can be found at: <http://saveourlake.org/lpbf-programs/coastal/hydrocoast-maps/pontchartrain-basin/>, or by calling 504-836-2215

To receive Hydrocoast map products by email, subscribe at: <http://saveourlake.org/lpbf-programs/coastal/hydrocoast-maps/>

Suggested map citation:
 Connor, P.F., J. Lopez, T. Henkel, E. Hillmann, M. Hopkins, D. Baker and K. Butcher, Hydrocoast Habitat Map: June 10 - 16, 2019 [map], 1:1,100,000, Lake Pontchartrain Basin Foundation, N.O., La., 2019. <<http://saveourlake.org/lpbf-programs/coastal/hydrocoast-maps/pontchartrain-basin/pontchartrain-basin-hydrocoast-map-archives/>>

To learn more about recreating on Lake Pontchartrain and Vicinities, consider purchasing LPBF's award winning, Fishing and Recreation Map for Lake Pontchartrain, Maurepas and Borgne

Go To SaveOurLake.org
 See Gift Shop



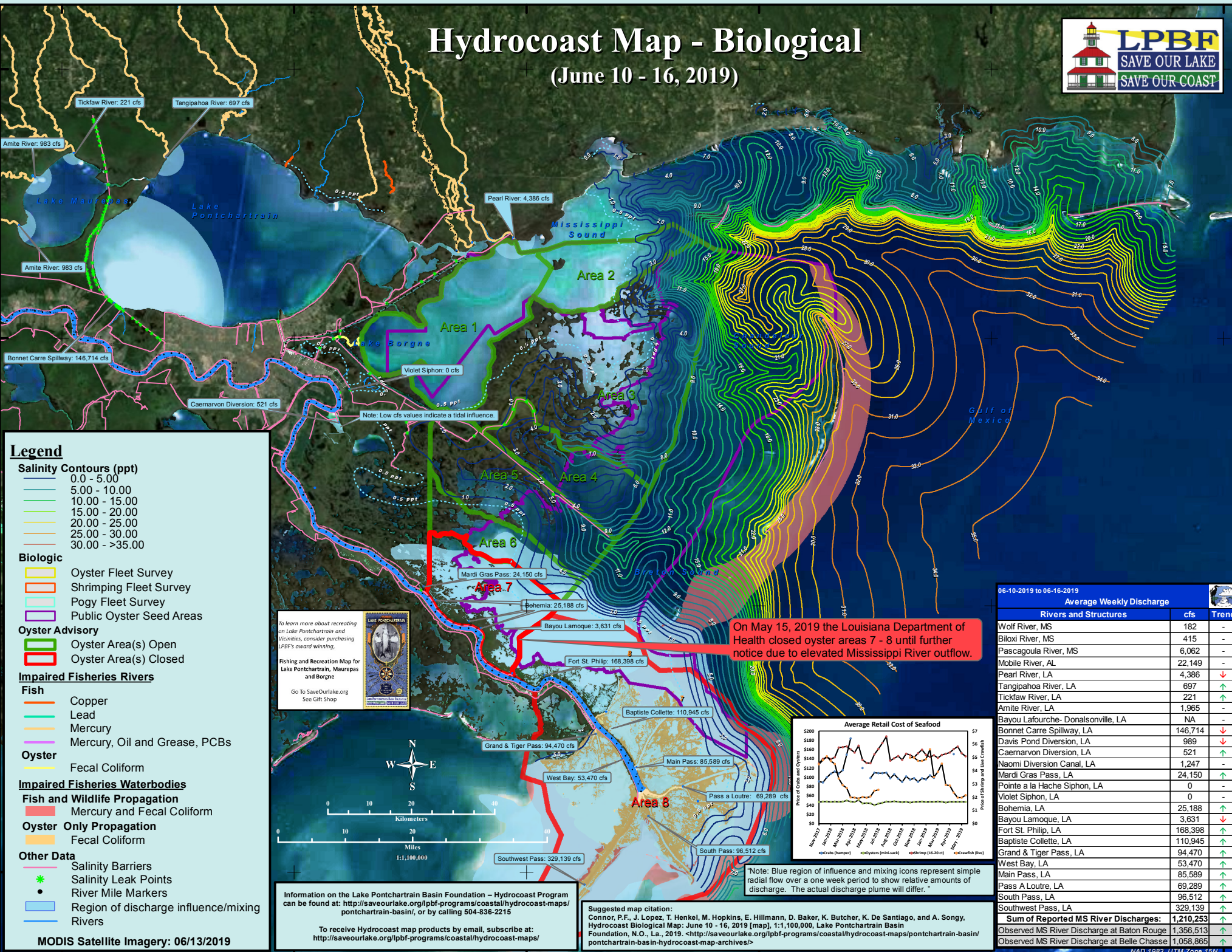
Hydrocoast Map - Biological

(June 10 - 16, 2019)



30°30'0"N
30°0'0"N
29°30'0"N
29°0'0"N

30°30'0"N
30°0'0"N
29°30'0"N
29°0'0"N



Legend

Salinity Contours (ppt)

- 0.0 - 5.00
- 5.00 - 10.00
- 10.00 - 15.00
- 15.00 - 20.00
- 20.00 - 25.00
- 25.00 - 30.00
- 30.00 - >35.00

Biologic

- Oyster Fleet Survey
- Shrimping Fleet Survey
- Pogy Fleet Survey
- Public Oyster Seed Areas

Oyster Advisory

- Oyster Area(s) Open
- Oyster Area(s) Closed

Impaired Fisheries Rivers

Fish

- Copper
- Lead
- Mercury
- Mercury, Oil and Grease, PCBs

Oyster

- Fecal Coliform

Impaired Fisheries Waterbodies

Fish and Wildlife Propagation

- Mercury and Fecal Coliform

Oyster Only Propagation

- Fecal Coliform

Other Data

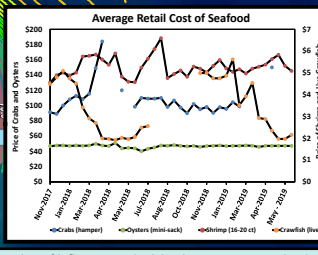
- Salinity Barriers
- Salinity Leak Points
- River Mile Markers
- Region of discharge influence/mixing
- Rivers

MODIS Satellite Imagery: 06/13/2019

To learn more about recreating in Lake Pontchartrain and Vicinities, consider purchasing LPBF's award winning, Fishing and Recreation Map for Lake Pontchartrain, Maurepas and Borgne

Go To SaveOurLake.org See Gift Shop

On May 15, 2019 the Louisiana Department of Health closed oyster areas 7 - 8 until further notice due to elevated Mississippi River outflow.



06-10-2019 to 06-16-2019

Average Weekly Discharge		
Rivers and Structures	cfs	Trend
Wolf River, MS	182	-
Biloxi River, MS	415	-
Pascagoula River, MS	6,062	-
Mobile River, AL	22,149	-
Pearl River, LA	4,386	↓
Tangipahoa River, LA	697	↑
Tickfaw River, LA	221	↑
Amite River, LA	1,965	-
Bayou Lafourche- Donaldsonville, LA	NA	-
Bonnet Carre Spillway, LA	146,714	↓
Davis Pond Diversion, LA	989	↓
Caernarvon Diversion, LA	521	↑
Naomi Diversion Canal, LA	1,247	↑
Mardi Gras Pass, LA	24,150	↑
Pointe a la Hache Siphon, LA	0	-
Violet Siphon, LA	0	-
Bohemia, LA	25,188	↑
Bayou Lamoque, LA	3,631	↓
Fort St. Phillip, LA	168,398	↑
Baptiste Collette, LA	110,945	↑
Grand & Tiger Pass, LA	94,470	↑
West Bay, LA	53,470	↑
Main Pass, LA	85,589	↑
Pass A Loutre, LA	69,289	↑
South Pass, LA	96,512	↑
Southwest Pass, LA	329,139	↑
Sum of Reported MS River Discharges:	1,210,253	↑
Observed MS River Discharge at Baton Rouge	1,356,513	↑
Observed MS River Discharge at Belle Chasse	1,058,865	↑

NAED 1983, UTM Zone 15N

Information on the Lake Pontchartrain Basin Foundation - Hydrocoast Program can be found at: <http://saveourlake.org/lpbf-programs/coastal/hydrocoast-maps/pontchartrain-basin/>, or by calling 504-836-2215

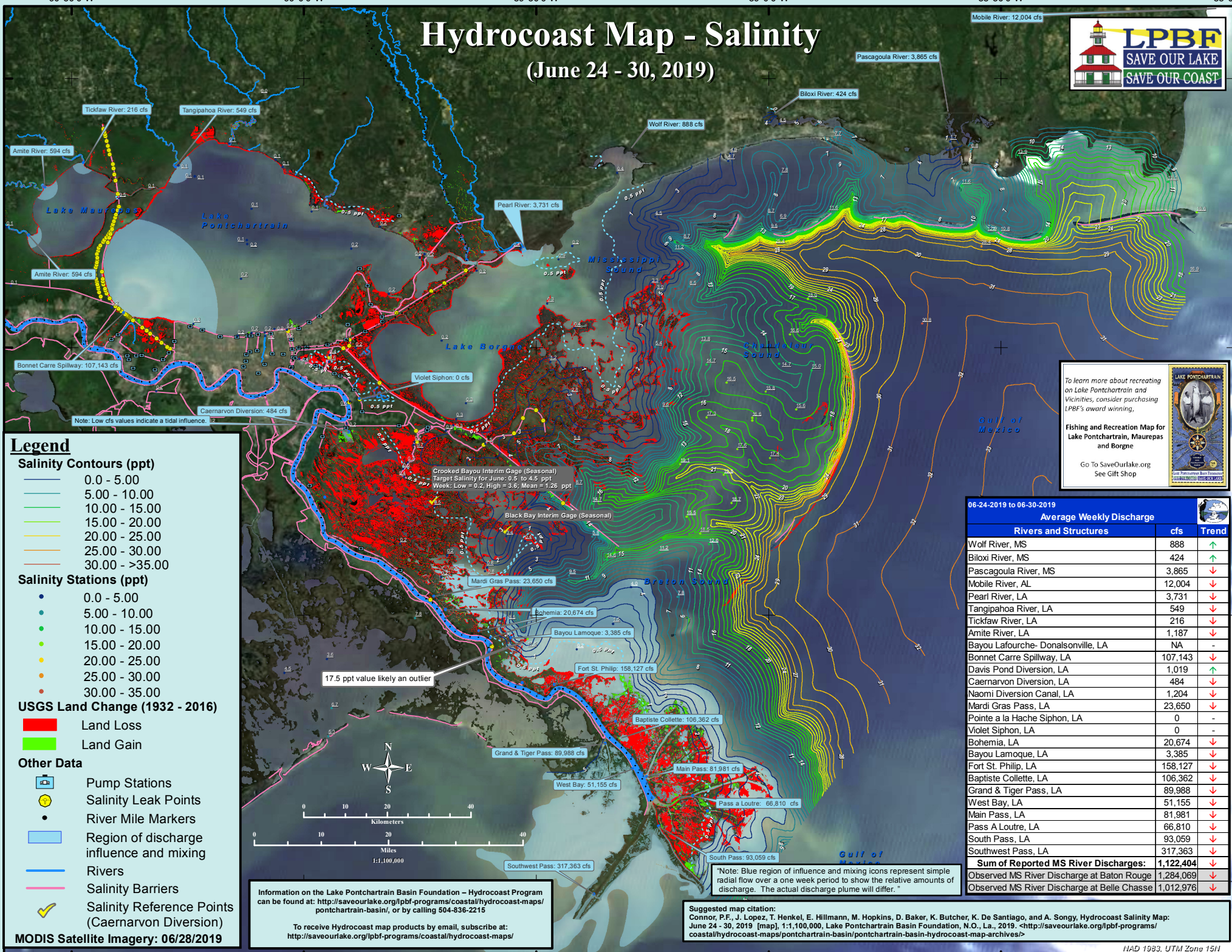
To receive Hydrocoast map products by email, subscribe at: <http://saveourlake.org/lpbf-programs/coastal/hydrocoast-maps/>

Suggested map citation:
Connor, P.F., J. Lopez, T. Henkel, M. Hopkins, E. Hillmann, D. Baker, K. Butcher, K. De Santiago, and A. Songy, Hydrocoast Biological Map: June 10 - 16, 2019 [map]. 1:1,100,000, Lake Pontchartrain Basin Foundation, N.O., La., 2019. <<http://saveourlake.org/lpbf-programs/coastal/hydrocoast-maps/pontchartrain-basin/pontchartrain-basin-hydrocoast-map-archives/>>

Note: Blue region of influence and mixing icons represent simple radial flow over a one week period to show relative amounts of discharge. The actual discharge plume will differ.

Hydrocoast Map - Salinity

(June 24 - 30, 2019)



Legend

Salinity Contours (ppt)

- 0.0 - 5.00
- 5.00 - 10.00
- 10.00 - 15.00
- 15.00 - 20.00
- 20.00 - 25.00
- 25.00 - 30.00
- 30.00 - >35.00

Salinity Stations (ppt)

- 0.0 - 5.00
- 5.00 - 10.00
- 10.00 - 15.00
- 15.00 - 20.00
- 20.00 - 25.00
- 25.00 - 30.00
- 30.00 - 35.00

USGS Land Change (1932 - 2016)

- Land Loss
- Land Gain

Other Data

- Pump Stations
- Salinity Leak Points
- River Mile Markers
- Region of discharge influence and mixing
- Rivers
- Salinity Barriers
- Salinity Reference Points (Caernarvon Diversion)

MODIS Satellite Imagery: 06/28/2019

Crooked Bayou Interim Gage (Seasonal)
Target Salinity for June: 0.5 to 4.5 ppt
Week: Low = 0.2, High = 3.6, Mean = 1.26 ppt

Black Bay Interim Gage (Seasonal)

Mardi Gras Pass: 23,650 cfs

Bohemia: 20,674 cfs

Bayou Lamoque: 3,385 cfs

Fort St. Philip: 158,127 cfs

Baptiste Collette: 106,362 cfs

Grand & Tiger Pass: 89,988 cfs

West Bay: 51,155 cfs

Southwest Pass: 317,363 cfs

South Pass: 93,059 cfs

Pass a Loure: 66,810 cfs

Main Pass: 81,981 cfs

17.5 ppt value likely an outlier

Information on the Lake Pontchartrain Basin Foundation – Hydrocoast Program can be found at: <http://saveourlake.org/lpbf-programs/coastal/hydrocoast-maps/pontchartrain-basin/>, or by calling 504-836-2215

To receive Hydrocoast map products by email, subscribe at: <http://saveourlake.org/lpbf-programs/coastal/hydrocoast-maps/>

Suggested map citation:
Connor, P.F., J. Lopez, T. Henkel, E. Hillmann, M. Hopkins, D. Baker, K. Butcher, K. De Santiago, and A. Songy. Hydrocoast Salinity Map: June 24 - 30, 2019 [map], 1:1,100,000, Lake Pontchartrain Basin Foundation, N.O., La., 2019. <<http://saveourlake.org/lpbf-programs/coastal/hydrocoast-maps/pontchartrain-basin/pontchartrain-basin-hydrocoast-map-archives/>>

To learn more about recreating on Lake Pontchartrain and Vicinities, consider purchasing LPBF's award winning,

Fishing and Recreation Map for Lake Pontchartrain, Maurepas and Borgne

Go To SaveOurLake.org
See Gift Shop

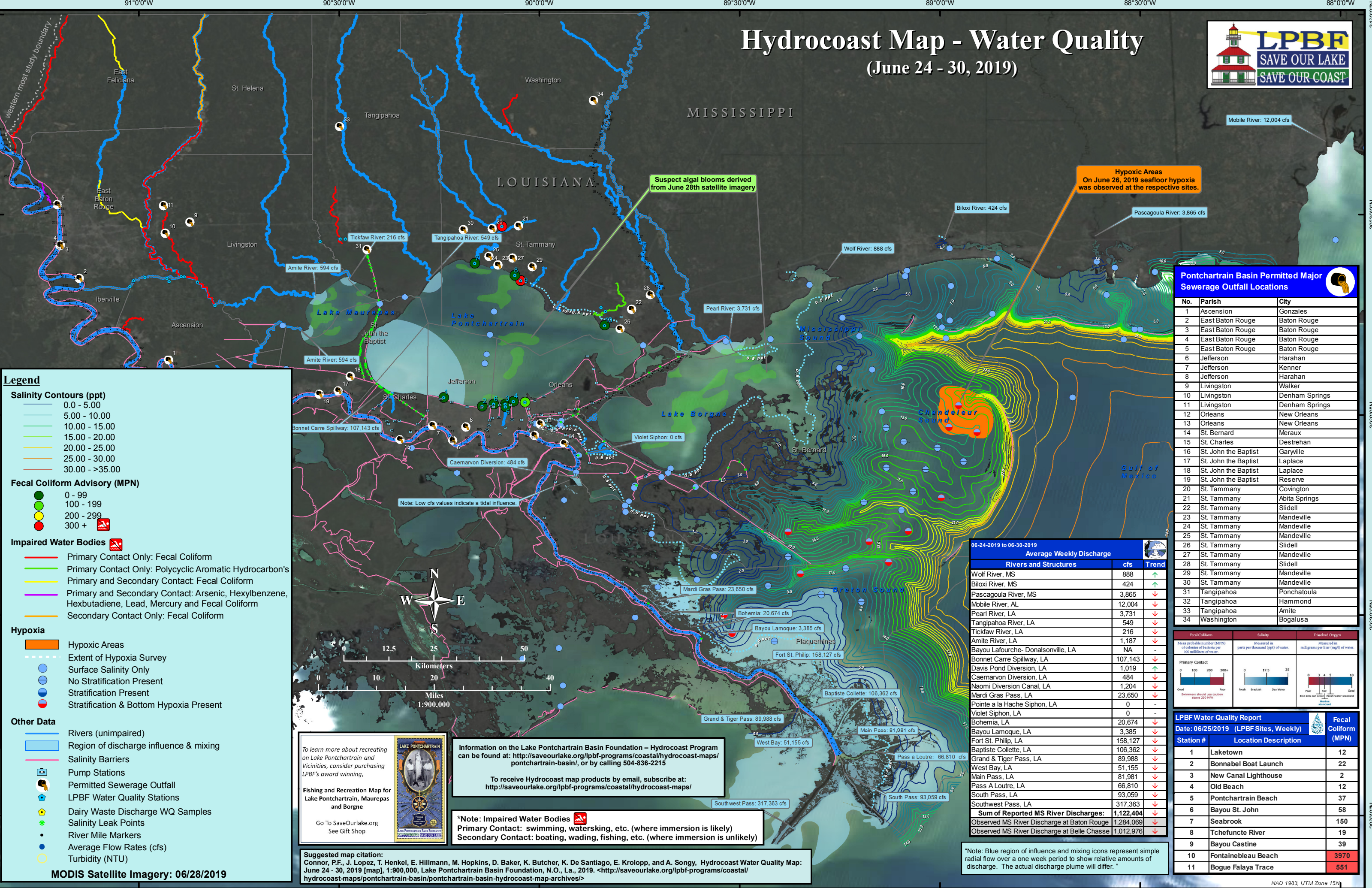
06-24-2019 to 06-30-2019

Average Weekly Discharge		
Rivers and Structures	cfs	Trend
Wolf River, MS	888	↑
Biloxi River, MS	424	↑
Pascagoula River, MS	3,865	↓
Mobile River, AL	12,004	↓
Pearl River, LA	3,731	↓
Tangipahoa River, LA	549	↓
Tickfaw River, LA	216	↓
Amite River, LA	1,187	↓
Bayou Lafourche- Donalsonville, LA	NA	-
Bonnet Carre Spillway, LA	107,143	↓
Davis Pond Diversion, LA	1,019	↑
Caernarvon Diversion, LA	484	↓
Naomi Diversion Canal, LA	1,204	↓
Mardi Gras Pass, LA	23,650	↓
Pointe a la Hache Siphon, LA	0	-
Violet Siphon, LA	0	-
Bohemia, LA	20,674	↓
Bayou Lamoque, LA	3,385	↓
Fort St. Philip, LA	158,127	↓
Baptiste Collette, LA	106,362	↓
Grand & Tiger Pass, LA	89,988	↓
West Bay, LA	51,155	↓
Main Pass, LA	81,981	↓
Pass A Loure, LA	66,810	↓
South Pass, LA	93,059	↓
Southwest Pass, LA	317,363	↓
Sum of Reported MS River Discharges:	1,122,404	↓
Observed MS River Discharge at Baton Rouge	1,284,069	↓
Observed MS River Discharge at Belle Chasse	1,012,976	↓

Note: Blue region of influence and mixing icons represent simple radial flow over a one week period to show the relative amounts of discharge. The actual discharge plume will differ.

Hydrocoast Map - Water Quality

(June 24 - 30, 2019)



Legend

Salinity Contours (ppt)

- 0.0 - 5.00
- 5.00 - 10.00
- 10.00 - 15.00
- 15.00 - 20.00
- 20.00 - 25.00
- 25.00 - 30.00
- 30.00 - >35.00

Fecal Coliform Advisory (MPN)

- 0 - 99
- 100 - 199
- 200 - 299
- 300 +

Impaired Water Bodies

- Primary Contact Only: Fecal Coliform
- Primary Contact Only: Polycyclic Aromatic Hydrocarbon's
- Primary and Secondary Contact: Fecal Coliform
- Primary and Secondary Contact: Arsenic, Hexylbenzene, Hexbutadiene, Lead, Mercury and Fecal Coliform
- Secondary Contact Only: Fecal Coliform

Hypoxia

- Hypoxic Areas
- Extent of Hypoxia Survey
- Surface Salinity Only
- No Stratification Present
- Stratification Present
- Stratification & Bottom Hypoxia Present

Other Data

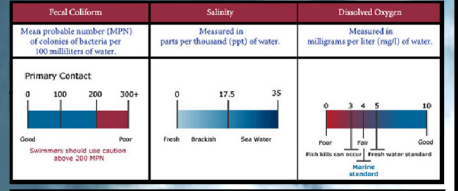
- Rivers (unimpaired)
- Region of discharge influence & mixing
- Salinity Barriers
- Pump Stations
- Permitted Sewerage Outfall
- LPBF Water Quality Stations
- Dairy Waste Discharge WQ Samples
- Salinity Leak Points
- River Mile Markers
- Average Flow Rates (cfs)
- Turbidity (NTU)

Pontchartrain Basin Permitted Major Sewerage Outfall Locations

No.	Parish	City
1	Ascension	Gonzales
2	East Baton Rouge	Baton Rouge
3	East Baton Rouge	Baton Rouge
4	East Baton Rouge	Baton Rouge
5	East Baton Rouge	Baton Rouge
6	Jefferson	Harahan
7	Jefferson	Kenner
8	Jefferson	Harahan
9	Livingston	Walker
10	Livingston	Denham Springs
11	Livingston	Denham Springs
12	Orleans	New Orleans
13	Orleans	New Orleans
14	St. Bernard	Meraux
15	St. Charles	Destrehan
16	St. John the Baptist	Garyville
17	St. John the Baptist	Laplace
18	St. John the Baptist	Laplace
19	St. John the Baptist	Reserve
20	St. Tammany	Covington
21	St. Tammany	Abita Springs
22	St. Tammany	Slidell
23	St. Tammany	Mandeville
24	St. Tammany	Mandeville
25	St. Tammany	Mandeville
26	St. Tammany	Slidell
27	St. Tammany	Mandeville
28	St. Tammany	Slidell
29	St. Tammany	Mandeville
30	St. Tammany	Mandeville
31	Tangipahoa	Ponchatoula
32	Tangipahoa	Hammond
33	Tangipahoa	Amite
34	Washington	Bogalusa

06-24-2019 to 06-30-2019 Average Weekly Discharge

Rivers and Structures	cfs	Trend
Wolf River, MS	888	↑
Biloxi River, MS	424	↑
Pascagoula River, MS	3,865	↓
Mobile River, AL	12,004	↓
Pearl River, LA	3,731	↓
Tangipahoa River, LA	549	↓
Tickfaw River, LA	216	↓
Amite River, LA	1,187	↓
Bayou Lafourche- Donalsonville, LA	NA	-
Bonnet Carre Spillway, LA	107,143	↓
Davis Pond Diversion, LA	1,019	↑
Caernarvon Diversion, LA	484	↓
Naomi Diversion Canal, LA	1,204	↓
Mardi Gras Pass, LA	23,650	↓
Pointe a la Hache Siphon, LA	0	-
Violet Siphon, LA	0	-
Bohemia, LA	20,674	↓
Bayou Lamoque, LA	3,385	↓
Fort St. Philip, LA	158,127	↓
Baptiste Collette, LA	106,362	↓
Grand & Tiger Pass, LA	89,988	↓
West Bay, LA	51,155	↓
Main Pass, LA	81,981	↓
Pass A Loutre, LA	66,810	↓
South Pass, LA	93,059	↓
Southwest Pass, LA	317,363	↓
Sum of Reported MS River Discharges:	1,122,404	↓
Observed MS River Discharge at Baton Rouge	1,284,069	↓
Observed MS River Discharge at Belle Chasse	1,012,976	↓



LPBF Water Quality Report

Date: 06/25/2019 (LPBF Sites, Weekly)

Station #	Location Description	Fecal Coliform (MPN)
1	Laketown	12
2	Bonnabel Boat Launch	22
3	New Canal Lighthouse	2
4	Old Beach	12
5	Pontchartrain Beach	37
6	Bayou St. John	58
7	Seabrook	150
8	Tchefuncte River	19
9	Bayou Castine	39
10	Fontainebleau Beach	3970
11	Bogue Falaya Trace	551

To learn more about recreating on Lake Pontchartrain and Vicinities, consider purchasing LPBF's award winning, Fishing and Recreation Map for Lake Pontchartrain, Maurepas and Borgne

Go To SaveOurLake.org See Gift Shop

Information on the Lake Pontchartrain Basin Foundation - Hydrocoast Program can be found at: <http://saveourlake.org/lpbf-programs/coastal/hydrocoast-maps/pontchartrain-basin/>, or by calling 504-836-2215

To receive Hydrocoast map products by email, subscribe at: <http://saveourlake.org/lpbf-programs/coastal/hydrocoast-maps/>

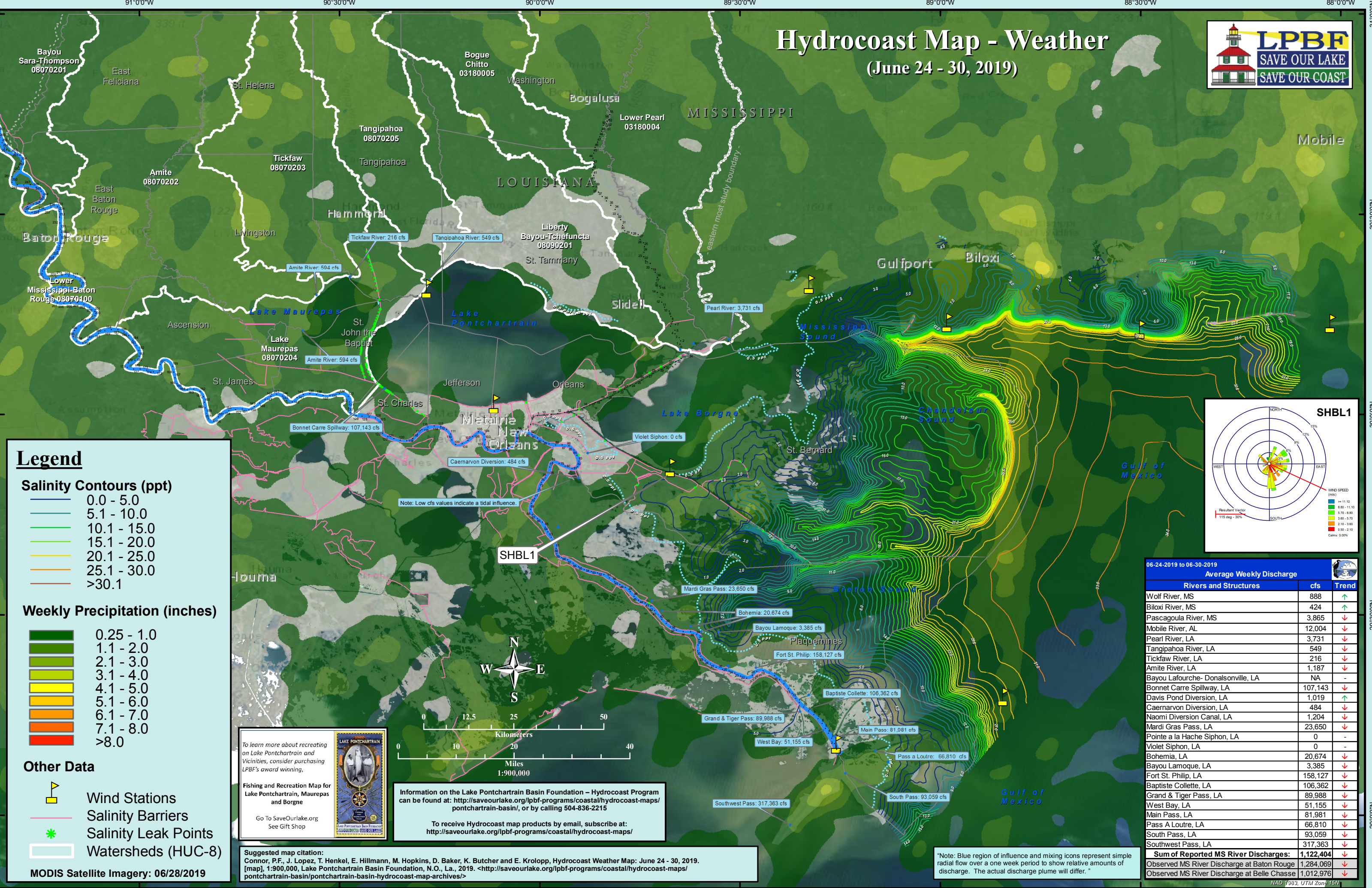
***Note: Impaired Water Bodies**
 Primary Contact: swimming, waterskiing, etc. (where immersion is likely)
 Secondary Contact: boating, wading, fishing, etc. (where immersion is unlikely)

Suggested map citation:
 Connor, P.F., J. Lopez, T. Henkel, E. Hillmann, M. Hopkins, D. Baker, K. Butcher, K. De Santiago, E. Krolopp, and A. Songy, Hydrocoast Water Quality Map: June 24 - 30, 2019 [map], 1:900,000, Lake Pontchartrain Basin Foundation, N.O., La., 2019. <<http://saveourlake.org/lpbf-programs/coastal/hydrocoast-maps/pontchartrain-basin/pontchartrain-basin-hydrocoast-map-archives/>>

*Note: Blue region of influence and mixing icons represent simple radial flow over a one week period to show relative amounts of discharge. The actual discharge plume will differ.

Hydrocoast Map - Weather

(June 24 - 30, 2019)



Legend

Salinity Contours (ppt)

- 0.0 - 5.0
- 5.1 - 10.0
- 10.1 - 15.0
- 15.1 - 20.0
- 20.1 - 25.0
- 25.1 - 30.0
- >30.1

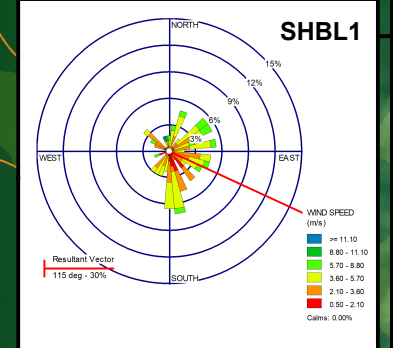
Weekly Precipitation (inches)

- 0.25 - 1.0
- 1.1 - 2.0
- 2.1 - 3.0
- 3.1 - 4.0
- 4.1 - 5.0
- 5.1 - 6.0
- 6.1 - 7.0
- 7.1 - 8.0
- >8.0

Other Data

- Wind Stations
- Salinity Barriers
- Salinity Leak Points
- Watersheds (HUC-8)

MODIS Satellite Imagery: 06/28/2019



06-24-2019 to 06-30-2019

Average Weekly Discharge

Rivers and Structures	cfs	Trend
Wolf River, MS	888	↑
Biloxi River, MS	424	↑
Pascagoula River, MS	3,865	↓
Mobile River, AL	12,004	↓
Pearl River, LA	3,731	↓
Tangipahoa River, LA	549	↓
Tickfaw River, LA	216	↓
Amite River, LA	1,187	↓
Bayou Lafourche- Donalsonville, LA	NA	-
Bonnet Carre Spillway, LA	107,143	↓
Davis Pond Diversion, LA	1,019	↑
Caernarvon Diversion, LA	484	↓
Naomi Diversion Canal, LA	1,204	↓
Mardi Gras Pass, LA	23,650	↓
Pointe a la Hache Siphon, LA	0	-
Violet Siphon, LA	0	-
Bohemia, LA	20,674	↓
Bayou Lamoque, LA	3,385	↓
Fort St. Philip, LA	158,127	↓
Baptiste Collette, LA	106,362	↓
Grand & Tiger Pass, LA	89,988	↓
West Bay, LA	51,155	↓
Main Pass, LA	81,981	↓
Pass a Loure, LA	66,810	↓
South Pass, LA	93,059	↓
Southwest Pass, LA	317,363	↓
Sum of Reported MS River Discharges:	1,122,404	
Observed MS River Discharge at Baton Rouge	1,284,069	↓
Observed MS River Discharge at Belle Chasse	1,012,976	↓

To learn more about recreating on Lake Pontchartrain and Vicinities, consider purchasing LPBF's award winning,

Fishing and Recreation Map for Lake Pontchartrain, Maurepas and Borgne

Go To SaveOurLake.org
See Gift Shop

Information on the Lake Pontchartrain Basin Foundation – Hydrocoast Program can be found at: <http://saveourlake.org/lpbf-programs/coastal/hydrocoast-maps/pontchartrain-basin/>, or by calling 504-836-2215

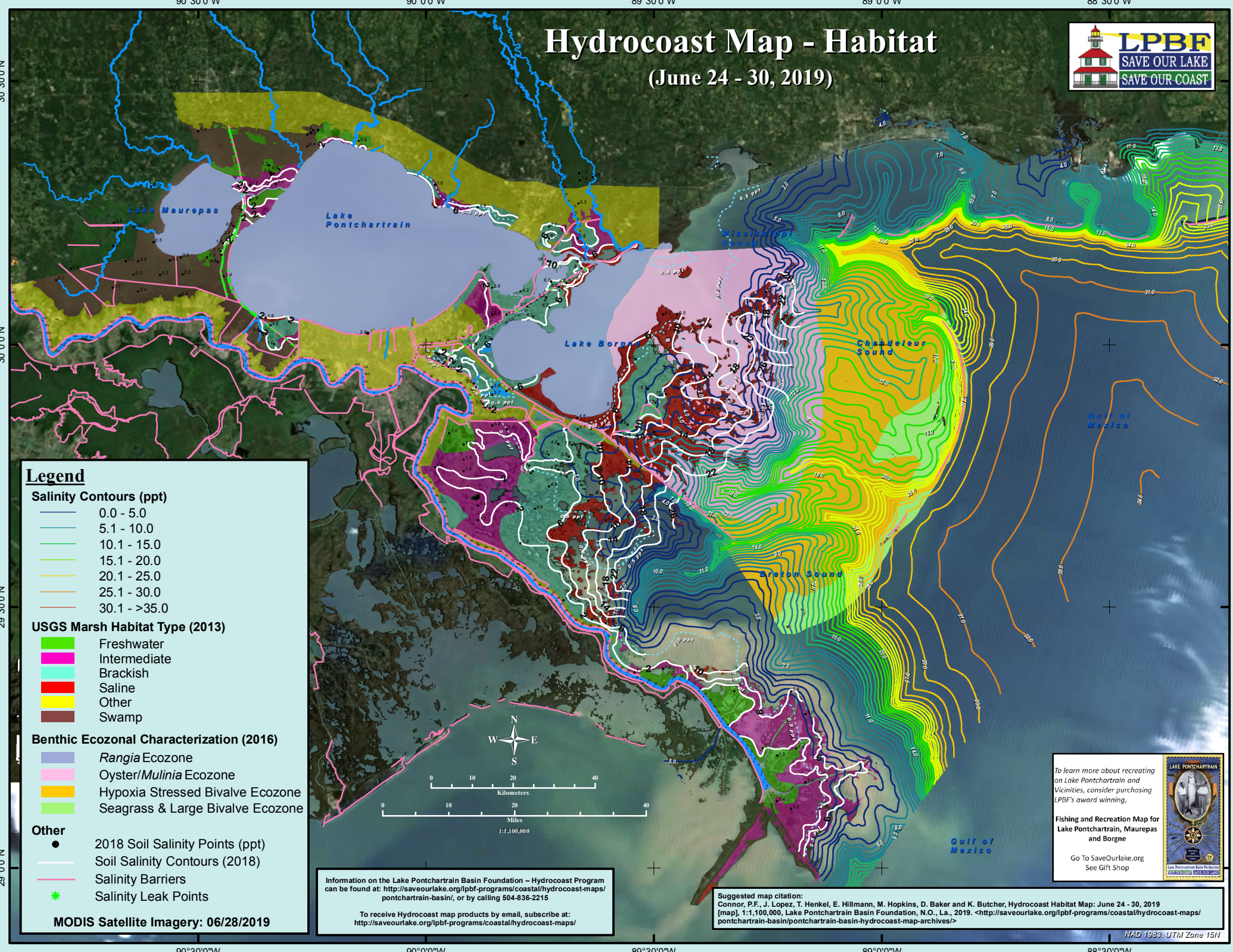
To receive Hydrocoast map products by email, subscribe at: <http://saveourlake.org/lpbf-programs/coastal/hydrocoast-maps/>

Suggested map citation:
Connor, P.F., J. Lopez, T. Henkel, E. Hillmann, M. Hopkins, D. Baker, K. Butcher and E. Krollop, Hydrocoast Weather Map: June 24 - 30, 2019. [map], 1:900,000, Lake Pontchartrain Basin Foundation, N.O., La., 2019. <<http://saveourlake.org/lpbf-programs/coastal/hydrocoast-maps/pontchartrain-basin/pontchartrain-basin-hydrocoast-map-archives/>>

Note: Blue region of influence and mixing icons represent simple radial flow over a one week period to show relative amounts of discharge. The actual discharge plume will differ.

Hydrocoast Map - Habitat

(June 24 - 30, 2019)



Legend

Salinity Contours (ppt)

- 0.0 - 5.0
- 5.1 - 10.0
- 10.1 - 15.0
- 15.1 - 20.0
- 20.1 - 25.0
- 25.1 - 30.0
- 30.1 - >35.0

USGS Marsh Habitat Type (2013)

- Freshwater
- Intermediate
- Brackish
- Saline
- Other
- Swamp

Benthic Ecozonal Characterization (2016)

- Rangia Ecozone
- Oyster/Mulinia Ecozone
- Hypoxia Stressed Bivalve Ecozone
- Seagrass & Large Bivalve Ecozone

Other

- 2018 Soil Salinity Points (ppt)
- Soil Salinity Contours (2018)
- Salinity Barriers
- Salinity Leak Points

MODIS Satellite Imagery: 06/28/2019



Information on the Lake Pontchartrain Basin Foundation – Hydrocoast Program can be found at: <http://saveourlake.org/lpbf-programs/coastal/hydrocoast-maps/pontchartrain-basin/>, or by calling 504-836-2215

To receive Hydrocoast map products by email, subscribe at: <http://saveourlake.org/lpbf-programs/coastal/hydrocoast-maps/>

Suggested map citation:
 Connor, P.F., J. Lopez, T. Henkel, E. Hillmann, M. Hopkins, D. Baker and K. Butcher, Hydrocoast Habitat Map: June 24 - 30, 2019 [map], 1:1,100,000, Lake Pontchartrain Basin Foundation, N.O., La., 2019. <<http://saveourlake.org/lpbf-programs/coastal/hydrocoast-maps/pontchartrain-basin/pontchartrain-basin-hydrocoast-map-archives/>>

To learn more about recreating on Lake Pontchartrain and Vicinities, consider purchasing LPBF's award winning,

Fishing and Recreation Map for Lake Pontchartrain, Maurepas and Borgne

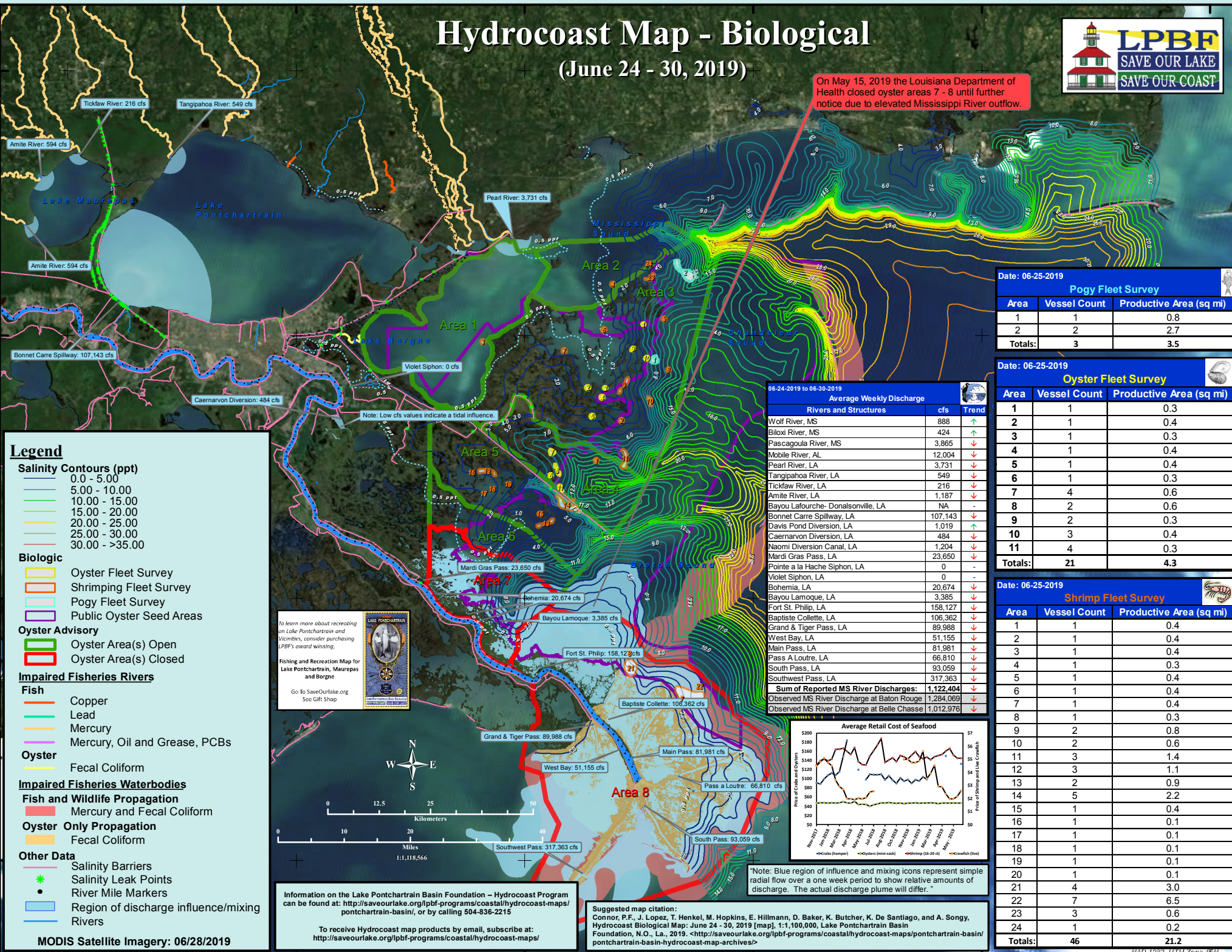
Go To SaveOurLake.org
 See Gift Shop

Hydrocoast Map - Biological

(June 24 - 30, 2019)



On May 15, 2019 the Louisiana Department of Health closed oyster areas 7 - 8 until further notice due to elevated Mississippi River outflow.



Legend

Salinity Contours (ppt)

- 0.0 - 5.00
- 5.00 - 10.00
- 10.00 - 15.00
- 15.00 - 20.00
- 20.00 - 25.00
- 25.00 - 30.00
- 30.00 - >35.00

Biologic

- Oyster Fleet Survey
- Shrimping Fleet Survey
- Pogy Fleet Survey
- Public Oyster Seed Areas

Oyster Advisory

- Oyster Area(s) Open
- Oyster Area(s) Closed

Impaired Fisheries Rivers

Fish

- Copper
- Lead
- Mercury
- Mercury, Oil and Grease, PCBs

Oyster

- Fecal Coliform

Impaired Fisheries Waterbodies

Fish and Wildlife Propagation

- Mercury and Fecal Coliform

Oyster Only Propagation

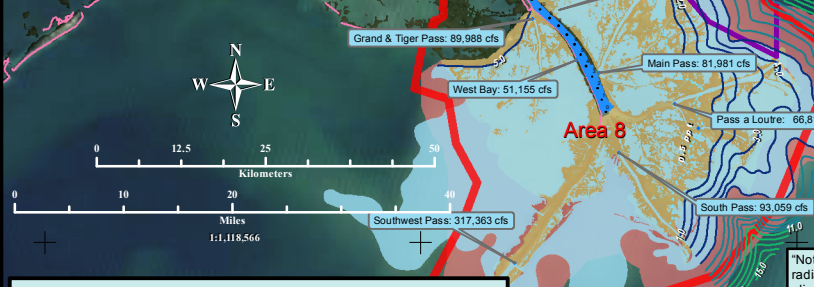
- Fecal Coliform

Other Data

- Salinity Barriers
- Salinity Leak Points
- River Mile Markers
- Region of discharge influence/mixing
- Rivers

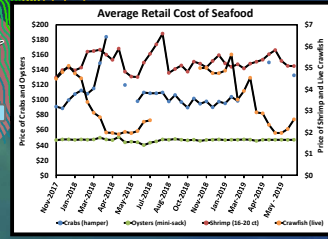
To learn more about purchasing an Lake Pontchartrain and Vicinities, consider purchasing LPBF's award winning, Fishing and Recreation Map for Lake Pontchartrain, Maurepas and Borgne

Go To SaveOurLake.org See Gift Shop



06-24-2019 to 06-30-2019

Rivers and Structures	cfs	Trend
Wolf River, MS	888	↑
Biloxi River, MS	424	↑
Pascagoula River, MS	3,865	↑
Mobile River, AL	12,004	↓
Pearl River, LA	3,731	↓
Tangipahoa River, LA	549	↓
Tickfaw River, LA	216	↓
Amite River, LA	1,187	↓
Bayou Lafourche- Donaldsonville, LA	NA	-
Bonnet Carre Spillway, LA	107,143	↓
Davis Pond Diversion, LA	1,019	↑
Caernarvon Diversion, LA	484	↑
Naomi Diversion Canal, LA	1,204	↓
Mardi Gras Pass, LA	23,650	↓
Pointe à la Hache Siphon, LA	0	-
Violet Siphon, LA	0	-
Bohemia, LA	20,674	↓
Bayou Lamoque, LA	3,385	↓
Fort St. Philip, LA	158,127	↓
Baptiste Collette, LA	106,362	↓
Grand & Tiger Pass, LA	89,988	↓
West Bay, LA	51,155	↓
Main Pass, LA	81,981	↓
Pass A Loutre, LA	66,810	↓
South Pass, LA	93,059	↓
Southwest Pass, LA	317,363	↓
Sum of Reported MS River Discharges:	1,122,404	↓
Observed MS River Discharge at Baton Rouge	1,284,069	↓
Observed MS River Discharge at Belle Chasse	1,012,976	↓



*Note: Blue region of influence and mixing icons represent simple radial flow over a one week period to show relative amounts of discharge. The actual discharge plume will differ.

Information on the Lake Pontchartrain Basin Foundation - Hydrocoast Program can be found at: <http://saveourlake.org/lpbf-programs/coastal/hydrocoast-maps/pontchartrain-basin/>, or by calling 504-836-2215

To receive Hydrocoast map products by email, subscribe at: <http://saveourlake.org/lpbf-programs/coastal/hydrocoast-maps/>

Suggested map citation:
 Connor, P.F., J. Lopez, T. Henkel, M. Hopkins, E. Hillmann, D. Baker, K. Butcher, K. De Santiago, and A. Songy, Hydrocoast Biological Map: June 24 - 30, 2019 [map], 1:1,100,000, Lake Pontchartrain Basin Foundation, N.O., La., 2019. <<http://saveourlake.org/lpbf-programs/coastal/hydrocoast-maps/pontchartrain-basin/pontchartrain-basin-hydrocoast-map-archives/>>

Date: 06-25-2019

Pogy Fleet Survey		
Area	Vessel Count	Productive Area (sq mi)
1	1	0.8
2	2	2.7
Totals:	3	3.5

Date: 06-25-2019

Oyster Fleet Survey		
Area	Vessel Count	Productive Area (sq mi)
1	1	0.3
2	1	0.4
3	1	0.3
4	1	0.4
5	1	0.4
6	1	0.3
7	4	0.6
8	2	0.6
9	2	0.3
10	3	0.4
11	4	0.3
Totals:	21	4.3

Date: 06-25-2019

Shrimp Fleet Survey		
Area	Vessel Count	Productive Area (sq mi)
1	1	0.4
2	1	0.4
3	1	0.4
4	1	0.3
5	1	0.4
6	1	0.4
7	1	0.4
8	1	0.3
9	2	0.8
10	2	0.6
11	3	1.4
12	3	1.1
13	2	0.9
14	5	2.2
15	1	0.4
16	1	0.1
17	1	0.1
18	1	0.1
19	1	0.1
20	1	0.1
21	4	3.0
22	7	6.5
23	3	0.6
24	1	0.2
Totals:	46	21.2