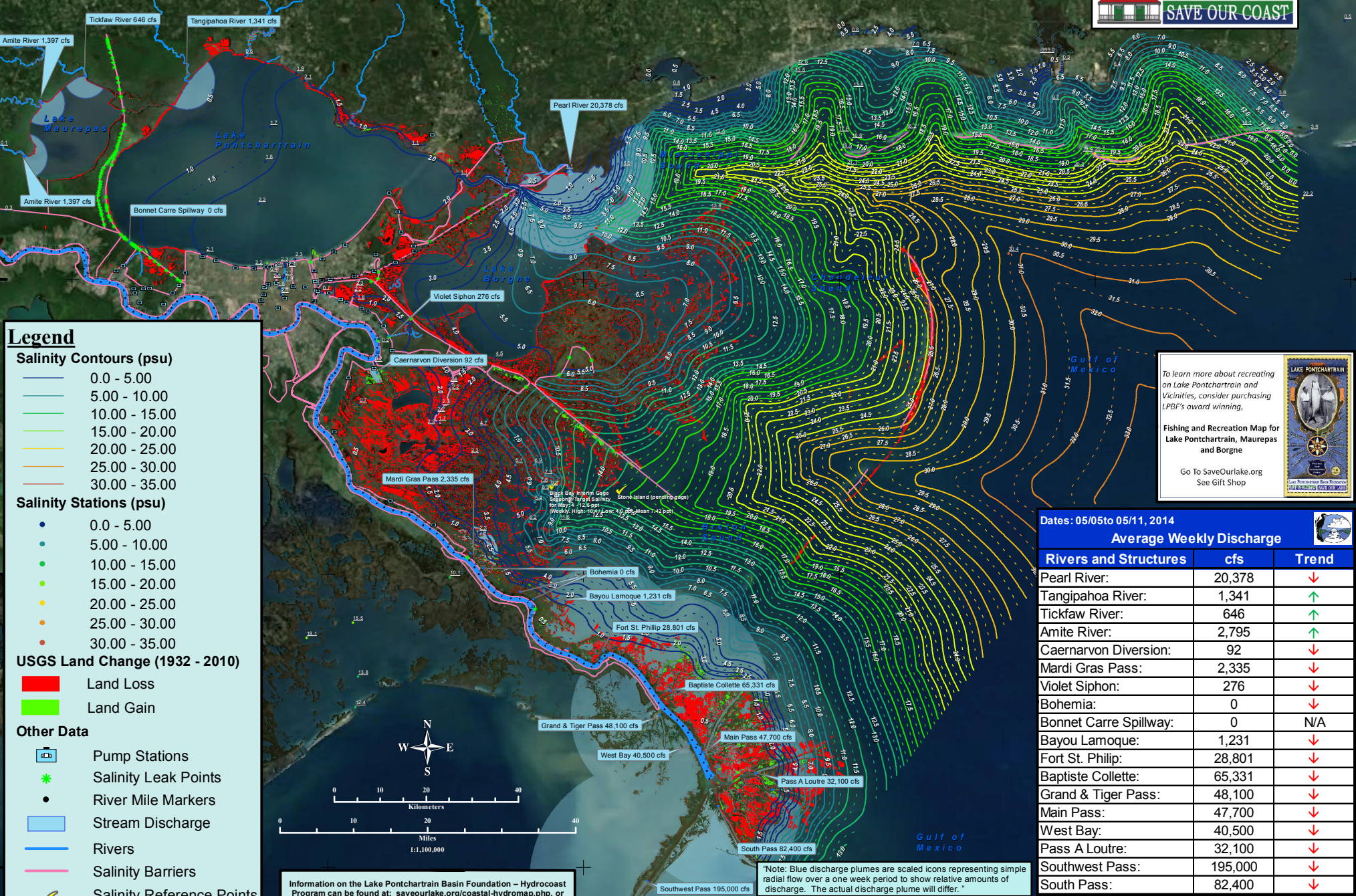


Hydrocoast Map - Salinity

(May 05 - 11, 2014)



Legend

Salinity Contours (psu)

- 0.0 - 5.00
- 5.00 - 10.00
- 10.00 - 15.00
- 15.00 - 20.00
- 20.00 - 25.00
- 25.00 - 30.00
- 30.00 - 35.00

Salinity Stations (psu)

- 0.0 - 5.00
- 5.00 - 10.00
- 10.00 - 15.00
- 15.00 - 20.00
- 20.00 - 25.00
- 25.00 - 30.00
- 30.00 - 35.00

USGS Land Change (1932 - 2010)

- Land Loss
- Land Gain

Other Data

- Pump Stations
- Salinity Leak Points
- River Mile Markers
- Stream Discharge
- Rivers
- Salinity Barriers
- Salinity Reference Points (Caernarvon Diversion)

MODIS Satellite Imagery: 05/05/2014

To learn more about recreating on Lake Pontchartrain and Vicinities, consider purchasing LPBF's award winning,

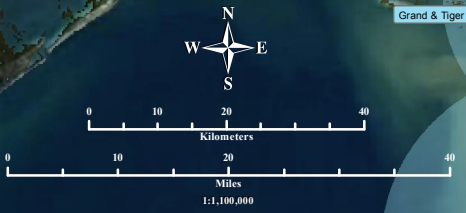
Fishing and Recreation Map for Lake Pontchartrain, Maurepas and Borgne

Go To SaveOurLake.org
See Gift Shop

Dates: 05/05to 05/11, 2014

Average Weekly Discharge

Rivers and Structures	cfs	Trend
Pearl River:	20,378	↓
Tangipahoa River:	1,341	↑
Tickfaw River:	646	↑
Amite River:	2,795	↑
Caernarvon Diversion:	92	↓
Mardi Gras Pass:	2,335	↓
Violet Siphon:	276	↓
Bohemia:	0	↓
Bonnet Carre Spillway:	0	N/A
Bayou Lamoque:	1,231	↓
Fort St. Philip:	28,801	↓
Baptiste Collette:	65,331	↓
Grand & Tiger Pass:	48,100	↓
Main Pass:	47,700	↓
West Bay:	40,500	↓
Pass A Loutre:	32,100	↓
Southwest Pass:	195,000	↓
South Pass:	82,400	↓



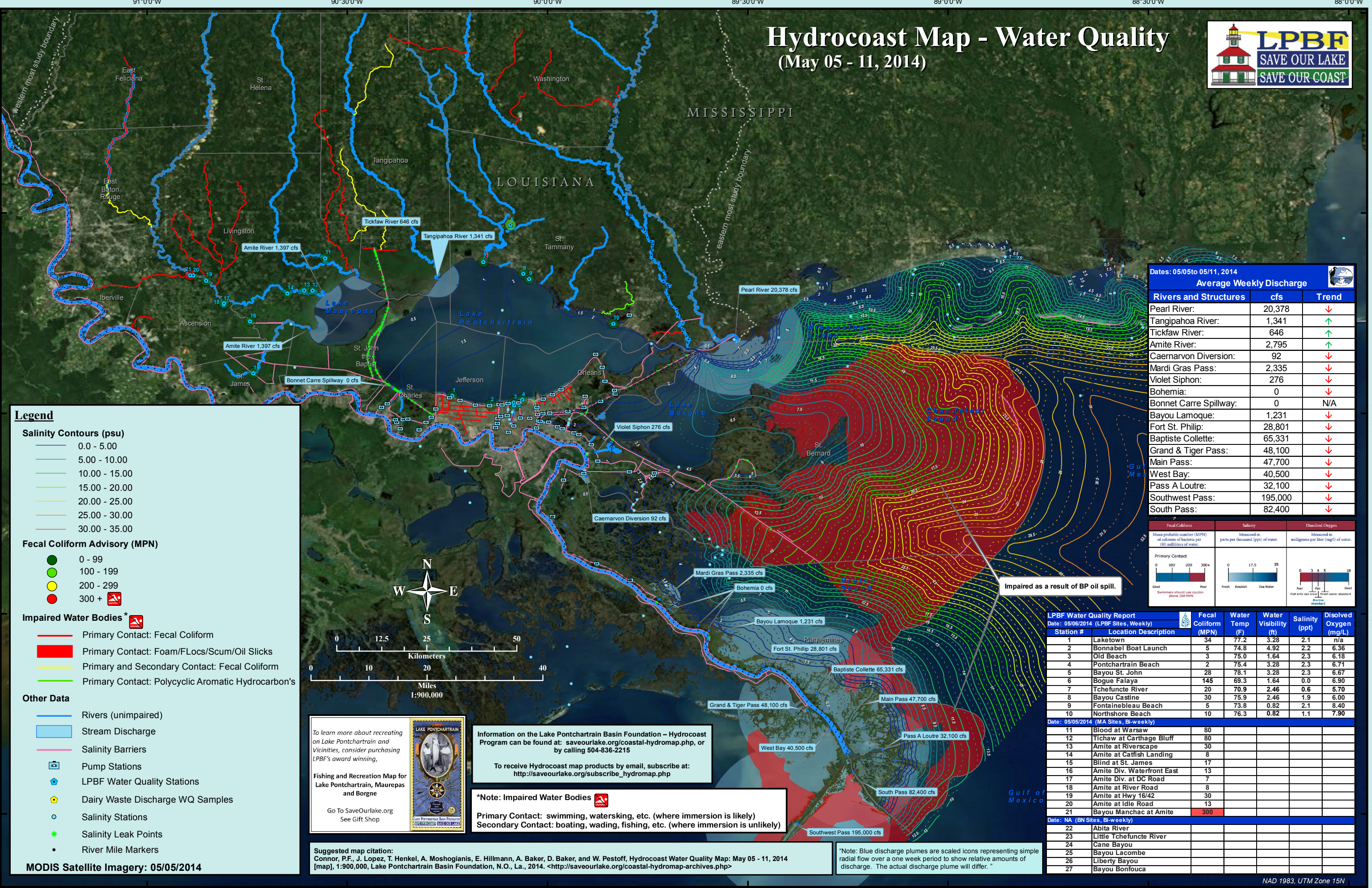
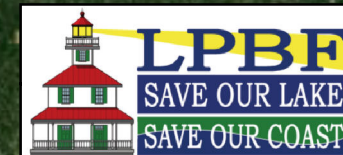
Information on the Lake Pontchartrain Basin Foundation - Hydrocoast Program can be found at: saveourlake.org/coastal-hydromap.php, or by calling 504-836-2215

To receive Hydrocoast map products by email, subscribe at: http://saveourlake.org/subscribe_hydromap.php

Suggested map citation:
Connor, P.F., J. Lopez, T. Henkel, A. Moshogianis, E. Hillmann, A. Baker, D. Baker, and W. Pestoff, Hydrocoast Salinity Map: May 05 - 11, 2014 [map], 1:1,100,000, Lake Pontchartrain Basin Foundation, N.O., La., 2014. <<http://saveourlake.org/coastal-hydromap-archives.php>>

Hydrocoast Map - Water Quality

(May 05 - 11, 2014)



Dates: 05/05 to 05/11, 2014
Average Weekly Discharge

Rivers and Structures	cfs	Trend
Pearl River:	20,378	↓
Tangipahoa River:	1,341	↑
Tickfaw River:	646	↑
Amite River:	2,795	↑
Caernarvon Diversion:	92	↓
Mardi Gras Pass:	2,335	↓
Violet Siphon:	276	↓
Bohemia:	0	↓
Bonnet Carre Spillway:	0	N/A
Bayou Lamoque:	1,231	↓
Fort St. Philip:	28,801	↓
Baptiste Collette:	65,331	↓
Grand & Tiger Pass:	48,100	↓
Main Pass:	47,700	↓
West Bay:	40,500	↓
Pass A Loutre:	32,100	↓
Southwest Pass:	195,000	↓
South Pass:	82,400	↓

Legend

Salinity Contours (psu)

- 0.0 - 5.00
- 5.00 - 10.00
- 10.00 - 15.00
- 15.00 - 20.00
- 20.00 - 25.00
- 25.00 - 30.00
- 30.00 - 35.00

Fecal Coliform Advisory (MPN)

- 0 - 99
- 100 - 199
- 200 - 299
- 300 +

Impaired Water Bodies *

- Primary Contact: Fecal Coliform
- Primary Contact: Foam/Flocs/Scum/Oil Slicks
- Primary and Secondary Contact: Fecal Coliform
- Primary Contact: Polycyclic Aromatic Hydrocarbon's

Other Data

- Rivers (unimpaired)
- Stream Discharge
- Salinity Barriers
- Pump Stations
- LPBF Water Quality Stations
- Dairy Waste Discharge WQ Samples
- Salinity Stations
- Salinity Leak Points
- River Mile Markers

MODIS Satellite Imagery: 05/05/2014



To learn more about recreating on Lake Pontchartrain and Vicinities, consider purchasing LPBF's award winning, Fishing and Recreation Map for Lake Pontchartrain, Maurepas and Borgne

Go To SaveOurLake.org See Gift Shop

Information on the Lake Pontchartrain Basin Foundation - Hydrocoast Program can be found at: saveourlake.org/coastal-hydromap.php, or by calling 504-836-2215

To receive Hydrocoast map products by email, subscribe at: http://saveourlake.org/subscribe_hydromap.php

***Note: Impaired Water Bodies**

Primary Contact: swimming, waterskiing, etc. (where immersion is likely)
Secondary Contact: boating, wading, fishing, etc. (where immersion is unlikely)

Suggested map citation:
Connor, P.F., J. Lopez, T. Henkel, A. Moshogianis, E. Hillmann, A. Baker, D. Baker, and W. Pestoff, Hydrocoast Water Quality Map: May 05 - 11, 2014 [map], 1:900,000, Lake Pontchartrain Basin Foundation, N.O., La., 2014. <<http://saveourlake.org/coastal-hydromap-archives.php>>

Impaired as a result of BP oil spill.

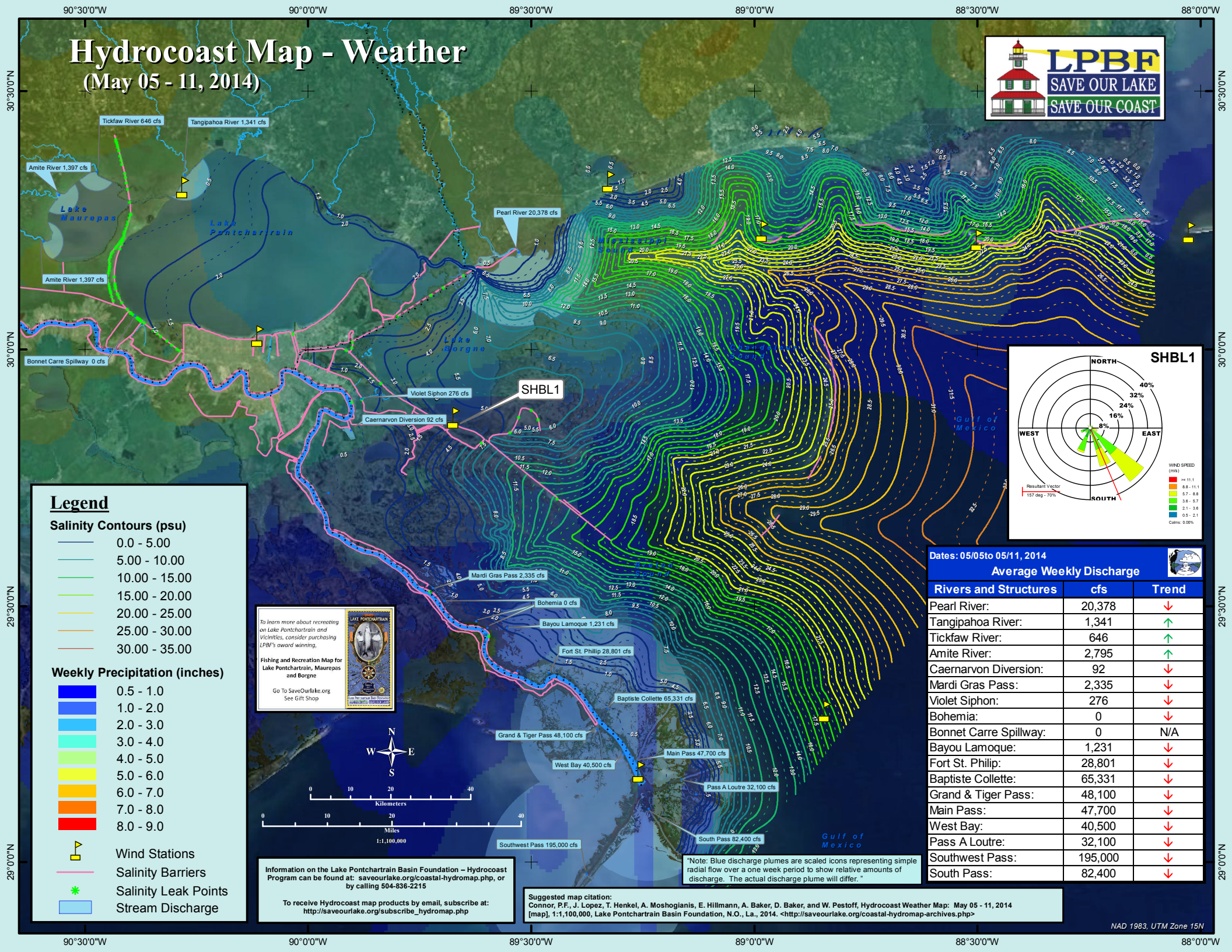
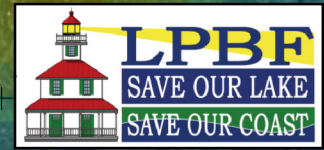
LPBF Water Quality Report
Date: 05/06/2014 (LPBF Sites, Weekly)

Station #	Location Description	Fecal Coliform (MPN)	Water Temp (F)	Water Visibility (ft)	Salinity (ppt)	Dissolved Oxygen (mg/L)
1	Laketown	34	77.2	3.28	2.1	n/a
2	Bonnabel Boat Launch	5	74.8	4.92	2.2	6.36
3	Old Beach	3	75.0	1.64	2.3	6.18
4	Pontchartrain Beach	2	75.4	3.28	2.3	6.71
5	Bayou St. John	28	78.1	3.28	2.3	6.67
6	Bogue Falaya	145	69.3	1.64	0.0	6.90
7	Tchefuncte River	20	70.9	2.46	0.6	5.70
8	Bayou Castine	30	75.9	2.46	1.9	6.00
9	Fontainebleau Beach	5	73.8	0.82	2.1	8.40
10	Northshore Beach	10	76.3	0.82	1.1	7.90
Date: 05/05/2014 (MA Sites, Bi-weekly)						
11	Blood at Warsaw	80				
12	Tichaw at Carthage Bluff	80				
13	Amite at Riverscape	30				
14	Amite at Catfish Landing	8				
15	Blind at St. James	17				
16	Amite Div. Waterfront East	13				
17	Amite Div. at DC Road	7				
18	Amite at River Road	8				
19	Amite at Hwy 16/42	30				
20	Amite at Idle Road	13				
21	Bayou Manchac at Amite	300				
Date: NA (BN Sites, Bi-weekly)						
22	Abita River					
23	Little Tchefuncte River					
24	Cane Bayou					
25	Bayou Lacombe					
26	Liberty Bayou					
27	Bayou Bonfouca					

*Note: Blue discharge plumes are scaled icons representing simple radial flow over a one week period to show relative amounts of discharge. The actual discharge plume will differ.

Hydrocoast Map - Weather

(May 05 - 11, 2014)



Legend

Salinity Contours (psu)

- 0.0 - 5.00
- 5.00 - 10.00
- 10.00 - 15.00
- 15.00 - 20.00
- 20.00 - 25.00
- 25.00 - 30.00
- 30.00 - 35.00

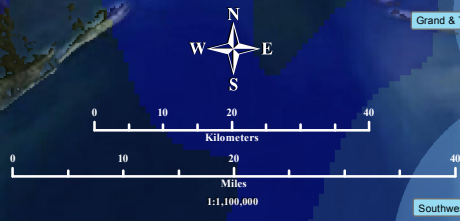
Weekly Precipitation (inches)

- 0.5 - 1.0
- 1.0 - 2.0
- 2.0 - 3.0
- 3.0 - 4.0
- 4.0 - 5.0
- 5.0 - 6.0
- 6.0 - 7.0
- 7.0 - 8.0
- 8.0 - 9.0

- Wind Stations
- Salinity Barriers
- Salinity Leak Points
- Stream Discharge

To learn more about recreating on Lake Pontchartrain and Vicinities, consider purchasing LPBF's award winning, Fishing and Recreation Map for Lake Pontchartrain, Maurepas and Borgne

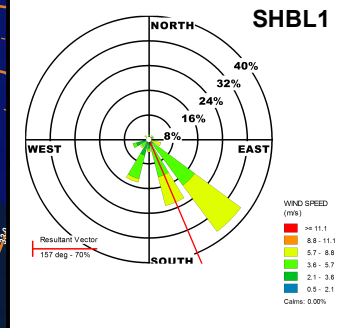
Go To SaveOurLake.org See Gift Shop



Information on the Lake Pontchartrain Basin Foundation - Hydrocoast Program can be found at: saveourlake.org/coastal-hydromap.php, or by calling 504-836-2215

To receive Hydrocoast map products by email, subscribe at: http://saveourlake.org/subscribe_hydromap.php

Suggested map citation:
 Connor, P.F., J. Lopez, T. Henkel, A. Moshoglani, E. Hillmann, A. Baker, D. Baker, and W. Pestoff, Hydrocoast Weather Map: May 05 - 11, 2014 [map], 1:1,100,000, Lake Pontchartrain Basin Foundation, N.O., La., 2014. <<http://saveourlake.org/coastal-hydromap-archives.php>>



Dates: 05/05 to 05/11, 2014

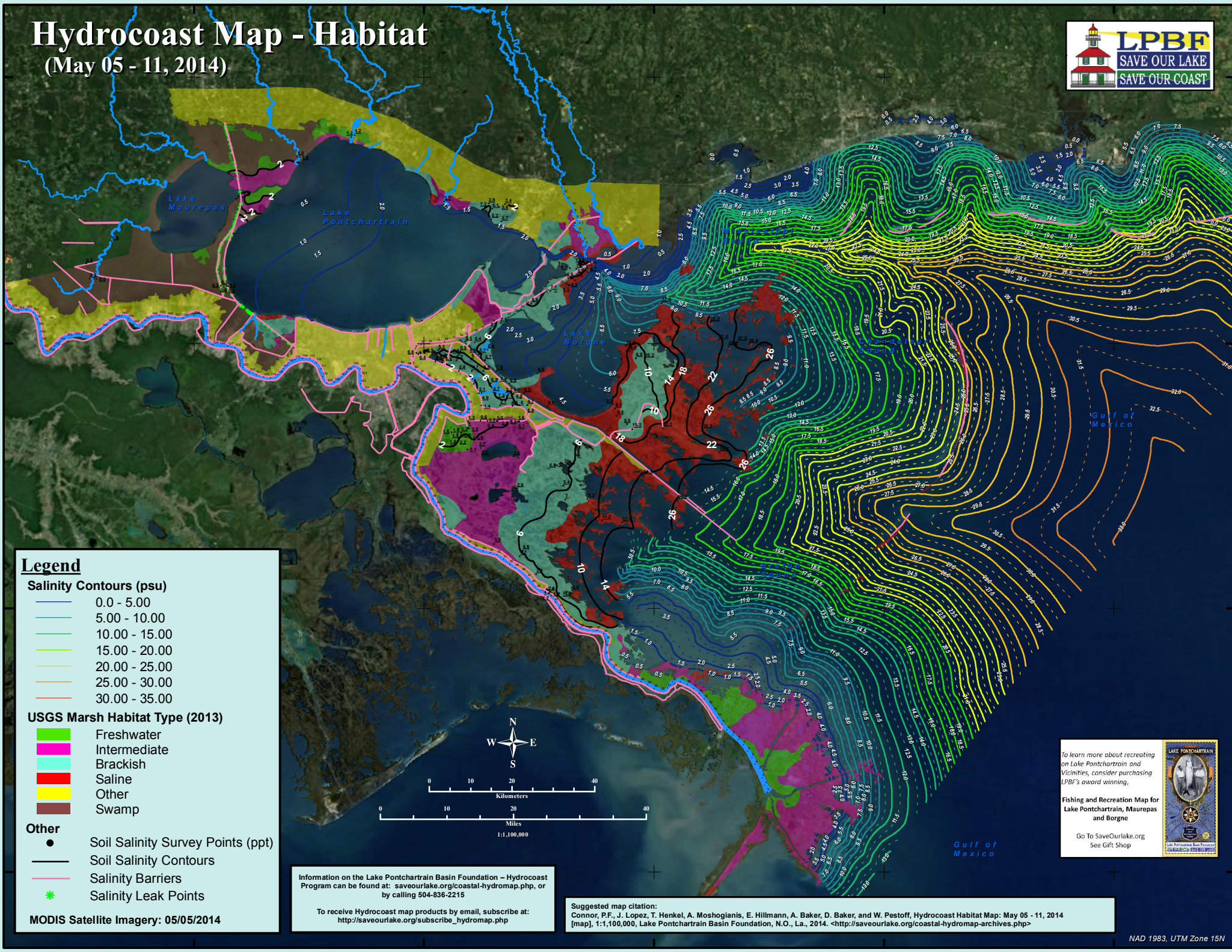
Average Weekly Discharge

Rivers and Structures	cfs	Trend
Pearl River:	20,378	↓
Tangipahoa River:	1,341	↑
Tickfaw River:	646	↑
Amite River:	2,795	↑
Caernarvon Diversion:	92	↓
Mardi Gras Pass:	2,335	↓
Violet Siphon:	276	↓
Bohemia:	0	↓
Bonnet Carre Spillway:	0	N/A
Bayou Lamoque:	1,231	↓
Fort St. Philip:	28,801	↓
Baptiste Collette:	65,331	↓
Grand & Tiger Pass:	48,100	↓
Main Pass:	47,700	↓
West Bay:	40,500	↓
Pass A Loutre:	32,100	↓
Southwest Pass:	195,000	↓
South Pass:	82,400	↓

Note: Blue discharge plumes are scaled icons representing simple radial flow over a one week period to show relative amounts of discharge. The actual discharge plume will differ.

Hydrocoast Map - Habitat

(May 05 - 11, 2014)



Legend

Salinity Contours (psu)

- 0.0 - 5.00
- 5.00 - 10.00
- 10.00 - 15.00
- 15.00 - 20.00
- 20.00 - 25.00
- 25.00 - 30.00
- 30.00 - 35.00

USGS Marsh Habitat Type (2013)

- Freshwater
- Intermediate
- Brackish
- Saline
- Other
- Swamp

Other

- Soil Salinity Survey Points (ppt)
- Soil Salinity Contours
- Salinity Barriers
- Salinity Leak Points

MODIS Satellite Imagery: 05/05/2014



Information on the Lake Pontchartrain Basin Foundation - Hydrocoast Program can be found at: saveourlake.org/coastal-hydromap.php, or by calling 504-836-2215

To receive Hydrocoast map products by email, subscribe at: http://saveourlake.org/subscribe_hydromap.php

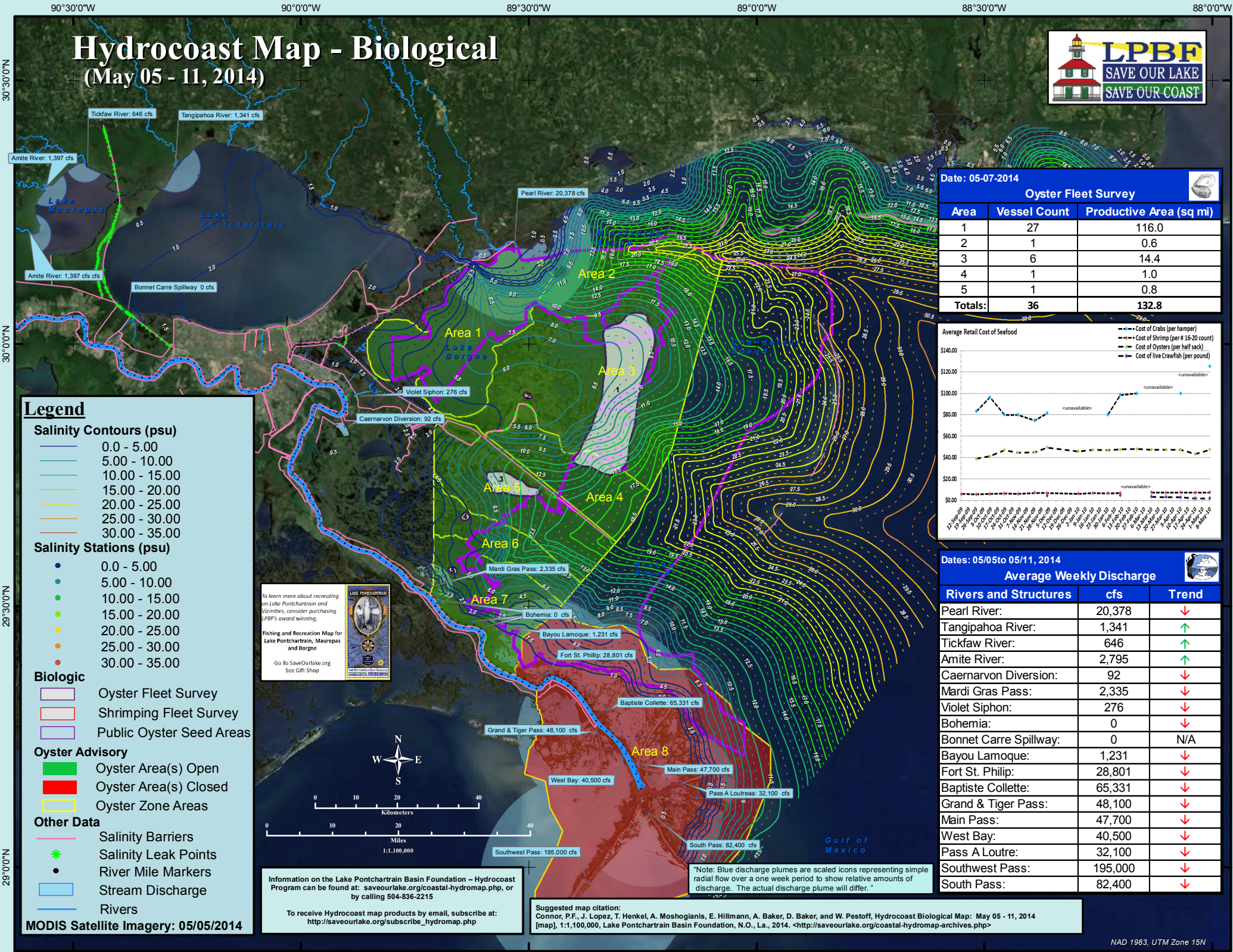
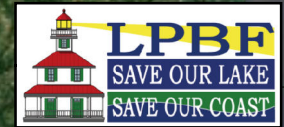
Suggested map citation:
Connor, P.F., J. Lopez, T. Henkel, A. Moshogian, E. Hillmann, A. Baker, D. Baker, and W. Pestoff, Hydrocoast Habitat Map: May 05 - 11, 2014 [map], 1:1,100,000, Lake Pontchartrain Basin Foundation, N.O., La., 2014. <<http://saveourlake.org/coastal-hydromap-archives.php>>

To learn more about recreating on Lake Pontchartrain and Vicinities, consider purchasing LPBF's award winning, Fishing and Recreation Map for Lake Pontchartrain, Maurepas and Borgne

Go To SaveOurLake.org See Gift Shop

Hydrocoast Map - Biological

(May 05 - 11, 2014)



Legend

Salinity Contours (psu)

- 0.0 - 5.00
- 5.00 - 10.00
- 10.00 - 15.00
- 15.00 - 20.00
- 20.00 - 25.00
- 25.00 - 30.00
- 30.00 - 35.00

Salinity Stations (psu)

- 0.0 - 5.00
- 5.00 - 10.00
- 10.00 - 15.00
- 15.00 - 20.00
- 20.00 - 25.00
- 25.00 - 30.00
- 30.00 - 35.00

Biologic

- Oyster Fleet Survey
- Shrimping Fleet Survey
- Public Oyster Seed Areas

Oyster Advisory

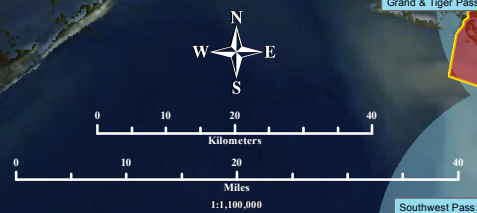
- Oyster Area(s) Open
- Oyster Area(s) Closed
- Oyster Zone Areas

Other Data

- Salinity Barriers
- Salinity Leak Points
- River Mile Markers
- Stream Discharge
- Rivers

MODIS Satellite Imagery: 05/05/2014

To learn more about recreating on Lake Pontchartrain and Vicinities, consider purchasing LPBF's award winning Fishing and Recreation Map for Lake Pontchartrain, Maurepas and Borgne. Go to saveourlake.org See Gift Shop



Information on the Lake Pontchartrain Basin Foundation - Hydrocoast Program can be found at: saveourlake.org/coastal-hydromap.php, or by calling 504-836-2215

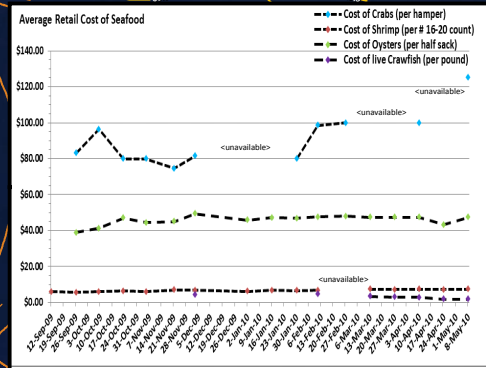
To receive Hydrocoast map products by email, subscribe at: http://saveourlake.org/subscribe_hydromap.php

Suggested map citation:
 Connor, P.F., J. Lopez, T. Henkel, A. Moshogianis, E. Hillmann, A. Baker, D. Baker, and W. Pestoff, Hydrocoast Biological Map: May 05 - 11, 2014 [map], 1:1,100,000, Lake Pontchartrain Basin Foundation, N.O., La., 2014. <<http://saveourlake.org/coastal-hydromap-archives.php>>

Date: 05-07-2014

Oyster Fleet Survey

Area	Vessel Count	Productive Area (sq mi)
1	27	116.0
2	1	0.6
3	6	14.4
4	1	1.0
5	1	0.8
Totals:	36	132.8



Dates: 05/05 to 05/11, 2014

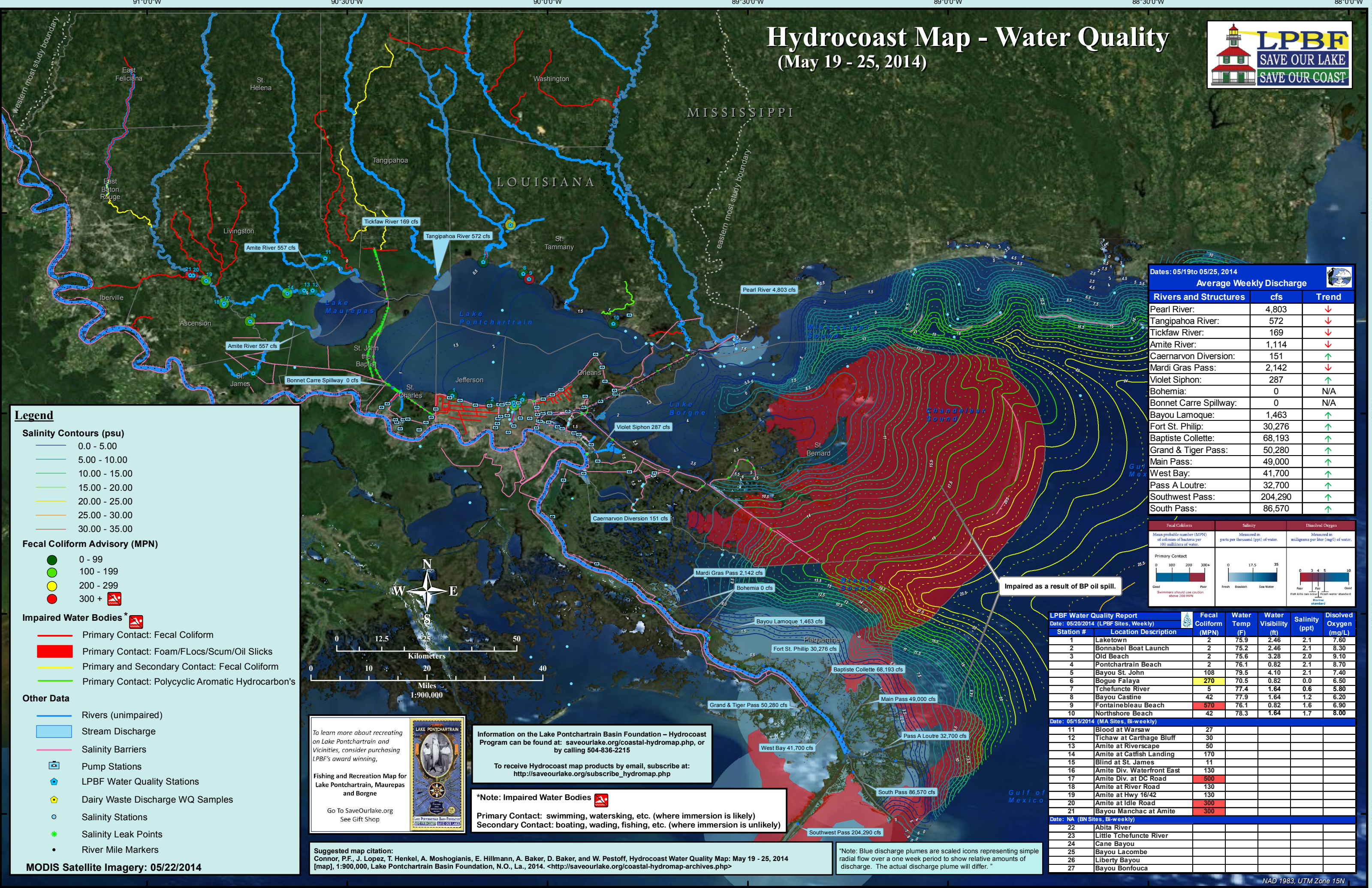
Average Weekly Discharge

Rivers and Structures	cfs	Trend
Pearl River:	20,378	↓
Tangipahoa River:	1,341	↑
Tickfaw River:	646	↑
Amite River:	2,795	↑
Caernarvon Diversion:	92	↓
Mardi Gras Pass:	2,335	↓
Violet Siphon:	276	↓
Bohemia:	0	↓
Bonnet Carre Spillway:	0	N/A
Bayou Lamoque:	1,231	↓
Fort St. Philip:	28,801	↓
Baptiste Collette:	65,331	↓
Grand & Tiger Pass:	48,100	↓
Main Pass:	47,700	↓
West Bay:	40,500	↓
Pass A Loutrea:	32,100	↓
Southwest Pass:	195,000	↓
South Pass:	82,400	↓

*Note: Blue discharge plumes are scaled icons representing simple radial flow over a one week period to show relative amounts of discharge. The actual discharge plume will differ.

Hydrocoast Map - Water Quality

(May 19 - 25, 2014)



Legend

Salinity Contours (psu)

- 0.0 - 5.00
- 5.00 - 10.00
- 10.00 - 15.00
- 15.00 - 20.00
- 20.00 - 25.00
- 25.00 - 30.00
- 30.00 - 35.00

Fecal Coliform Advisory (MPN)

- 0 - 99
- 100 - 199
- 200 - 299
- 300 +

Impaired Water Bodies *

- Primary Contact: Fecal Coliform
- Primary Contact: Foam/Flocs/Scum/Oil Slicks
- Primary and Secondary Contact: Fecal Coliform
- Primary Contact: Polycyclic Aromatic Hydrocarbon's

Other Data

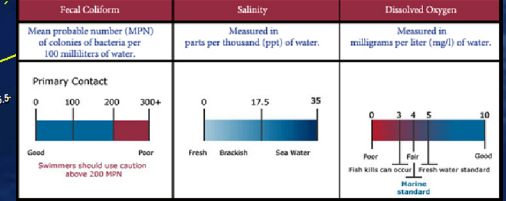
- Rivers (unimpaired)
- Stream Discharge
- Salinity Barriers
- Pump Stations
- LPBF Water Quality Stations
- Dairy Waste Discharge WQ Samples
- Salinity Stations
- Salinity Leak Points
- River Mile Markers

MODIS Satellite Imagery: 05/22/2014

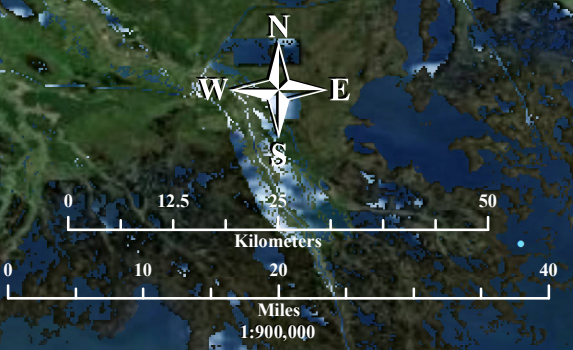
Dates: 05/19 to 05/25, 2014

Average Weekly Discharge

Rivers and Structures	cfs	Trend
Pearl River:	4,803	↓
Tangipahoa River:	572	↓
Tickfaw River:	169	↓
Amite River:	1,114	↓
Caernarvon Diversion:	151	↑
Mardi Gras Pass:	2,142	↓
Violet Siphon:	287	↑
Bohemia:	0	N/A
Bonnet Carre Spillway:	0	N/A
Bayou Lamoque:	1,463	↑
Fort St. Philip:	30,276	↑
Baptiste Collette:	68,193	↑
Grand & Tiger Pass:	50,280	↑
Main Pass:	49,000	↑
West Bay:	41,700	↑
Pass A Loutre:	32,700	↑
Southwest Pass:	204,290	↑
South Pass:	86,570	↑



Impaired as a result of BP oil spill.



To learn more about recreating on Lake Pontchartrain and Vicinities, consider purchasing LPBF's award winning, Fishing and Recreation Map for Lake Pontchartrain, Maurepas and Borgne

Go To SaveOurLake.org See Gift Shop

Information on the Lake Pontchartrain Basin Foundation - Hydrocoast Program can be found at: saveourlake.org/coastal-hydromap.php, or by calling 504-836-2215

To receive Hydrocoast map products by email, subscribe at: http://saveourlake.org/subscribe_hydromap.php

***Note: Impaired Water Bodies**

Primary Contact: swimming, waterskiing, etc. (where immersion is likely)
 Secondary Contact: boating, wading, fishing, etc. (where immersion is unlikely)

Suggested map citation:
 Connor, P.F., J. Lopez, T. Henkel, A. Moshogianis, E. Hillmann, A. Baker, D. Baker, and W. Pestoff, Hydrocoast Water Quality Map: May 19 - 25, 2014 [map], 1:900,000, Lake Pontchartrain Basin Foundation, N.O., La., 2014. <<http://saveourlake.org/coastal-hydromap-archives.php>>

LPBF Water Quality Report

Date: 05/20/2014 (LPBF Sites, Weekly)

Station #	Location Description	Fecal Coliform (MPN)	Water Temp (F)	Water Visibility (ft)	Salinity (ppt)	Dissolved Oxygen (mg/L)
1	Laketown	2	75.9	2.46	2.1	7.60
2	Bonnabel Boat Launch	2	75.2	2.46	2.1	8.30
3	Old Beach	2	75.6	3.28	2.0	9.10
4	Pontchartrain Beach	2	76.1	0.82	2.1	8.70
5	Bayou St. John	108	79.5	4.10	2.1	7.40
6	Bogue Falaya	270	70.5	0.82	0.0	6.50
7	Tchefuncte River	5	77.4	1.64	0.6	5.80
8	Bayou Castine	42	77.9	1.64	1.2	6.20
9	Fontainebleau Beach	570	76.1	0.82	1.6	6.90
10	Northshore Beach	42	78.3	1.64	1.7	8.00

Date: 05/15/2014 (MA Sites, Bi-weekly)

11	Blood at Warsaw	27				
12	Tichaw at Carthage Bluff	30				
13	Amite at Riverscape	50				
14	Amite at Catfish Landing	170				
15	Blind at St. James	11				
16	Amite Div. Waterfront East	130				
17	Amite Div. at DC Road	500				
18	Amite at River Road	130				
19	Amite at Hwy 16/42	130				
20	Amite at Idle Road	300				
21	Bayou Manchac at Amite	300				

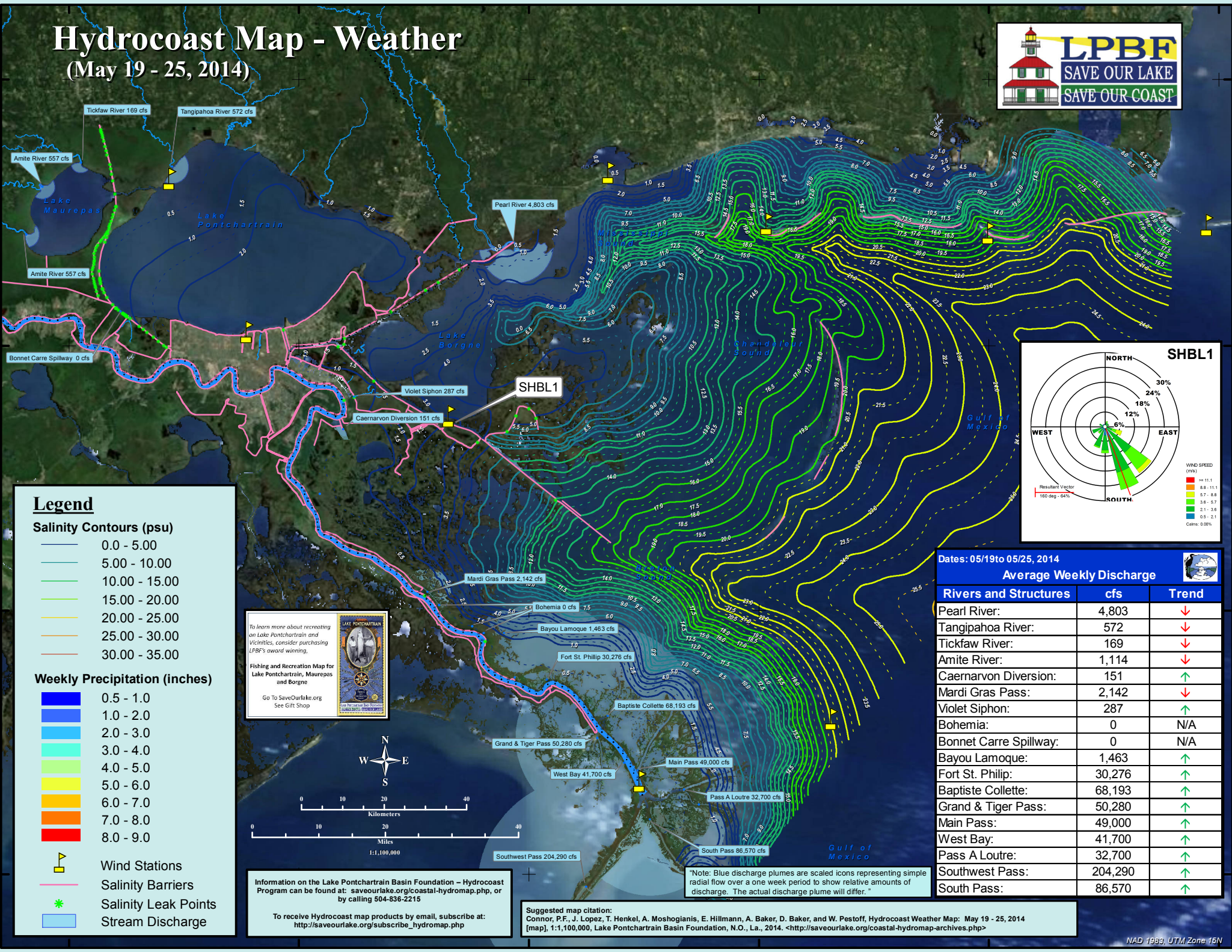
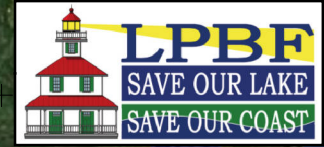
Date: NA (BN Sites, Bi-weekly)

22	Abita River					
23	Little Tchefuncte River					
24	Cane Bayou					
25	Bayou Lacombe					
26	Liberty Bayou					
27	Bayou Bonfouca					

*Note: Blue discharge plumes are scaled icons representing simple radial flow over a one week period to show relative amounts of discharge. The actual discharge plume will differ.

Hydrocoast Map - Weather

(May 19 - 25, 2014)



Legend

Salinity Contours (psu)

- 0.0 - 5.00
- 5.00 - 10.00
- 10.00 - 15.00
- 15.00 - 20.00
- 20.00 - 25.00
- 25.00 - 30.00
- 30.00 - 35.00

Weekly Precipitation (inches)

- 0.5 - 1.0
- 1.0 - 2.0
- 2.0 - 3.0
- 3.0 - 4.0
- 4.0 - 5.0
- 5.0 - 6.0
- 6.0 - 7.0
- 7.0 - 8.0
- 8.0 - 9.0

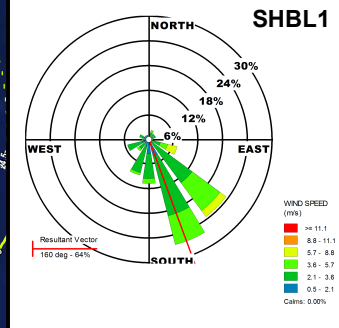
- Wind Stations
- Salinity Barriers
- Salinity Leak Points
- Stream Discharge

To learn more about recreating on Lake Pontchartrain and Vicinities, consider purchasing LPBF's award winning Fishing and Recreation Map for Lake Pontchartrain, Maurepas and Borgne. Go To SaveOurLake.org See Gift Shop



Information on the Lake Pontchartrain Basin Foundation - Hydrocoast Program can be found at: saveourlake.org/coastal-hydromap.php, or by calling 504-836-2215

To receive Hydrocoast map products by email, subscribe at: http://saveourlake.org/subscribe_hydromap.php



Dates: 05/19 to 05/25, 2014

Average Weekly Discharge

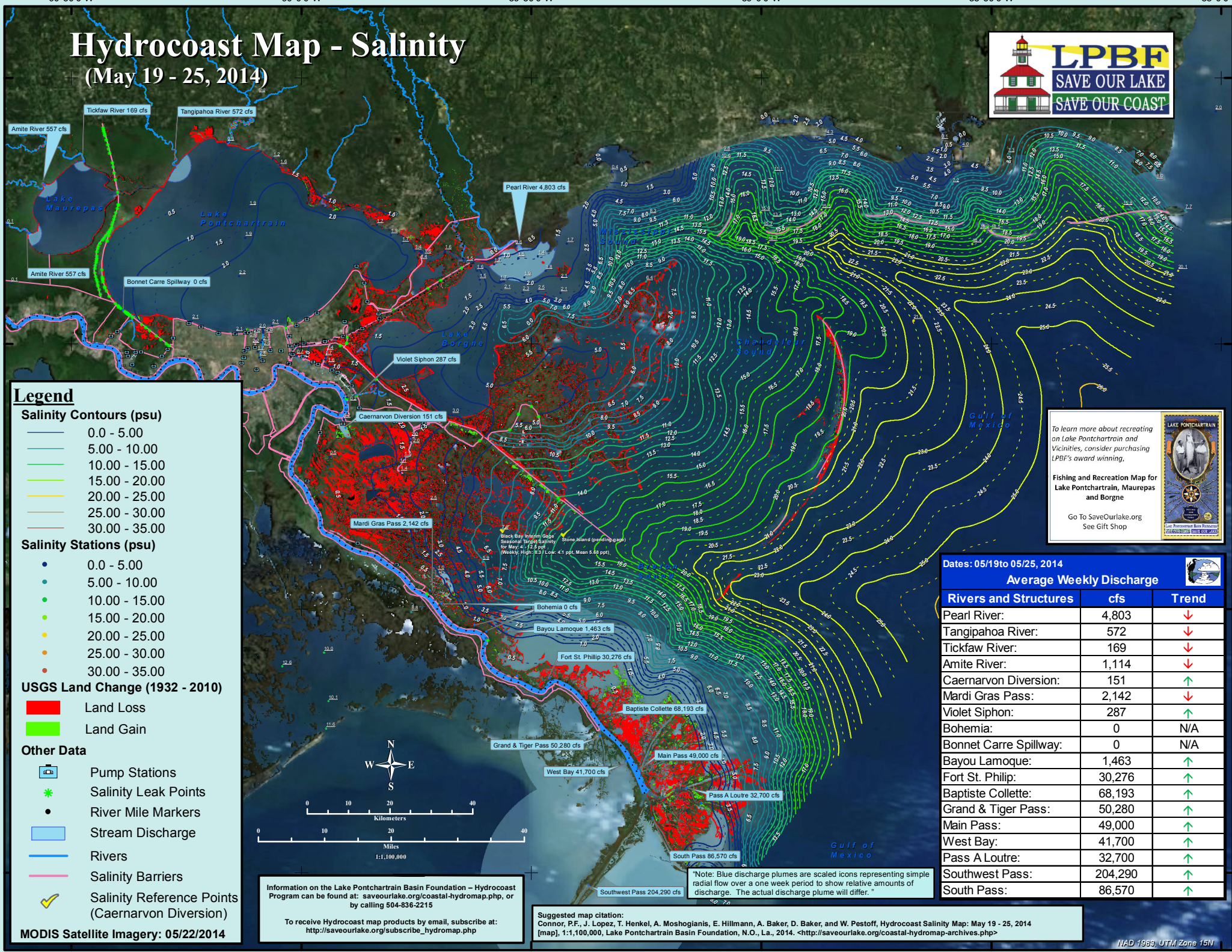
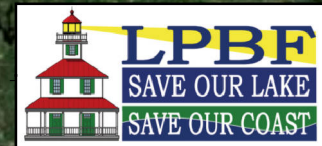
Rivers and Structures	cfs	Trend
Pearl River:	4,803	↓
Tangipahoa River:	572	↓
Tickfaw River:	169	↓
Amite River:	1,114	↓
Caernarvon Diversion:	151	↑
Mardi Gras Pass:	2,142	↓
Violet Siphon:	287	↑
Bohemia:	0	N/A
Bonnet Carre Spillway:	0	N/A
Bayou Lamoque:	1,463	↑
Fort St. Philip:	30,276	↑
Baptiste Collette:	68,193	↑
Grand & Tiger Pass:	50,280	↑
Main Pass:	49,000	↑
West Bay:	41,700	↑
Pass A Loutre:	32,700	↑
Southwest Pass:	204,290	↑
South Pass:	86,570	↑

Note: Blue discharge plumes are scaled icons representing simple radial flow over a one week period to show relative amounts of discharge. The actual discharge plume will differ.

Suggested map citation: Connor, P.F., J. Lopez, T. Henkel, A. Moshoglani, E. Hillmann, A. Baker, D. Baker, and W. Pestoff, Hydrocoast Weather Map: May 19 - 25, 2014 [map], 1:1,100,000, Lake Pontchartrain Basin Foundation, N.O., La., 2014. <<http://saveourlake.org/coastal-hydromap-archives.php>>

Hydrocoast Map - Salinity

(May 19 - 25, 2014)



Legend

Salinity Contours (psu)

- 0.0 - 5.00
- 5.00 - 10.00
- 10.00 - 15.00
- 15.00 - 20.00
- 20.00 - 25.00
- 25.00 - 30.00
- 30.00 - 35.00

Salinity Stations (psu)

- 0.0 - 5.00
- 5.00 - 10.00
- 10.00 - 15.00
- 15.00 - 20.00
- 20.00 - 25.00
- 25.00 - 30.00
- 30.00 - 35.00

USGS Land Change (1932 - 2010)

- Land Loss
- Land Gain

Other Data

- Pump Stations
- Salinity Leak Points
- River Mile Markers
- Stream Discharge
- Rivers
- Salinity Barriers
- Salinity Reference Points (Caernarvon Diversion)

MODIS Satellite Imagery: 05/22/2014

To learn more about recreating on Lake Pontchartrain and Vicinities, consider purchasing LPBF's award winning, Fishing and Recreation Map for Lake Pontchartrain, Maurepas and Borgne

Go To SaveOurLake.org
See Gift Shop

Dates: 05/19 to 05/25, 2014

Average Weekly Discharge

Rivers and Structures	cfs	Trend
Pearl River:	4,803	↓
Tangipahoa River:	572	↓
Tickfaw River:	169	↓
Amite River:	1,114	↓
Caernarvon Diversion:	151	↑
Mardi Gras Pass:	2,142	↓
Violet Siphon:	287	↑
Bohemia:	0	N/A
Bonnet Carre Spillway:	0	N/A
Bayou Lamoque:	1,463	↑
Fort St. Philip:	30,276	↑
Baptiste Collette:	68,193	↑
Grand & Tiger Pass:	50,280	↑
Main Pass:	49,000	↑
West Bay:	41,700	↑
Pass A Loutre:	32,700	↑
Southwest Pass:	204,290	↑
South Pass:	86,570	↑

Information on the Lake Pontchartrain Basin Foundation - Hydrocoast Program can be found at: saveourlake.org/coastal-hydromap.php, or by calling 504-836-2215

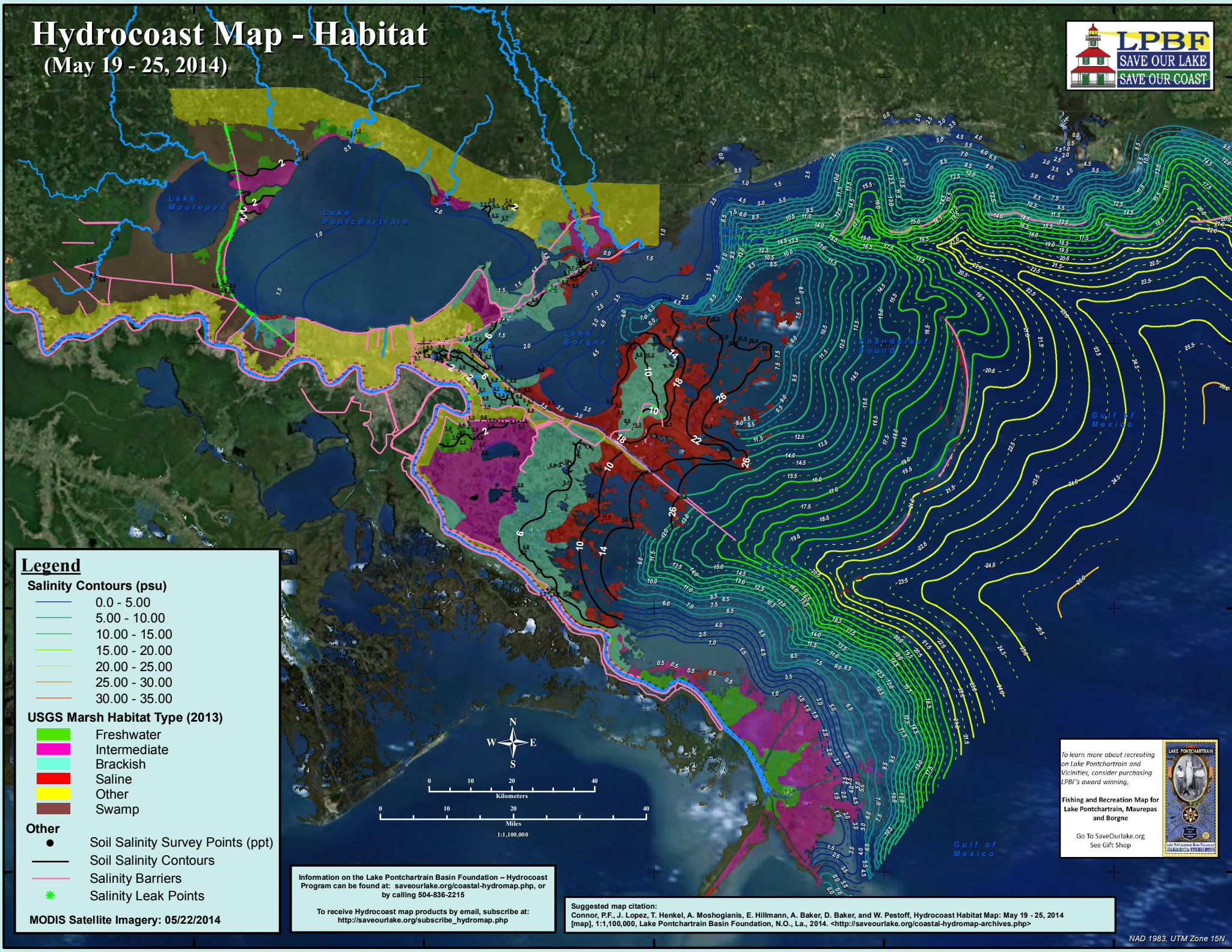
To receive Hydrocoast map products by email, subscribe at: http://saveourlake.org/subscribe_hydromap.php

Suggested map citation:
Connor, P.F., J. Lopez, T. Henkel, A. Moshogianis, E. Hillmann, A. Baker, D. Baker, and W. Pestoff, Hydrocoast Salinity Map: May 19 - 25, 2014 [map], 1:1,100,000, Lake Pontchartrain Basin Foundation, N.O., La., 2014. <<http://saveourlake.org/coastal-hydromap-archives.php>>

NAD 1983, UTM Zone 15N

Hydrocoast Map - Habitat

(May 19 - 25, 2014)



Legend

Salinity Contours (psu)

- 0.0 - 5.00
- 5.00 - 10.00
- 10.00 - 15.00
- 15.00 - 20.00
- 20.00 - 25.00
- 25.00 - 30.00
- 30.00 - 35.00

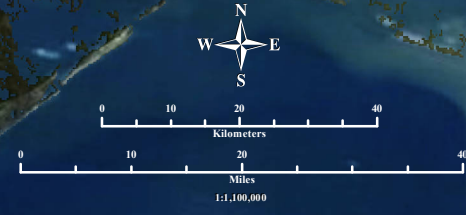
USGS Marsh Habitat Type (2013)

- Freshwater
- Intermediate
- Brackish
- Saline
- Other
- Swamp

Other

- Soil Salinity Survey Points (ppt)
- Soil Salinity Contours
- Salinity Barriers
- Salinity Leak Points

MODIS Satellite Imagery: 05/22/2014



Information on the Lake Pontchartrain Basin Foundation - Hydrocoast Program can be found at: saveourlake.org/coastal-hydromap.php, or by calling 504-836-2215

To receive Hydrocoast map products by email, subscribe at: http://saveourlake.org/subscribe_hydromap.php

Suggested map citation:
 Connor, P.F., J. Lopez, T. Henkel, A. Moshogian, E. Hillmann, A. Baker, D. Baker, and W. Pestoff, Hydrocoast Habitat Map: May 19 - 25, 2014 [map], 1:1,100,000, Lake Pontchartrain Basin Foundation, N.O., La., 2014. <<http://saveourlake.org/coastal-hydromap-archives.php>>

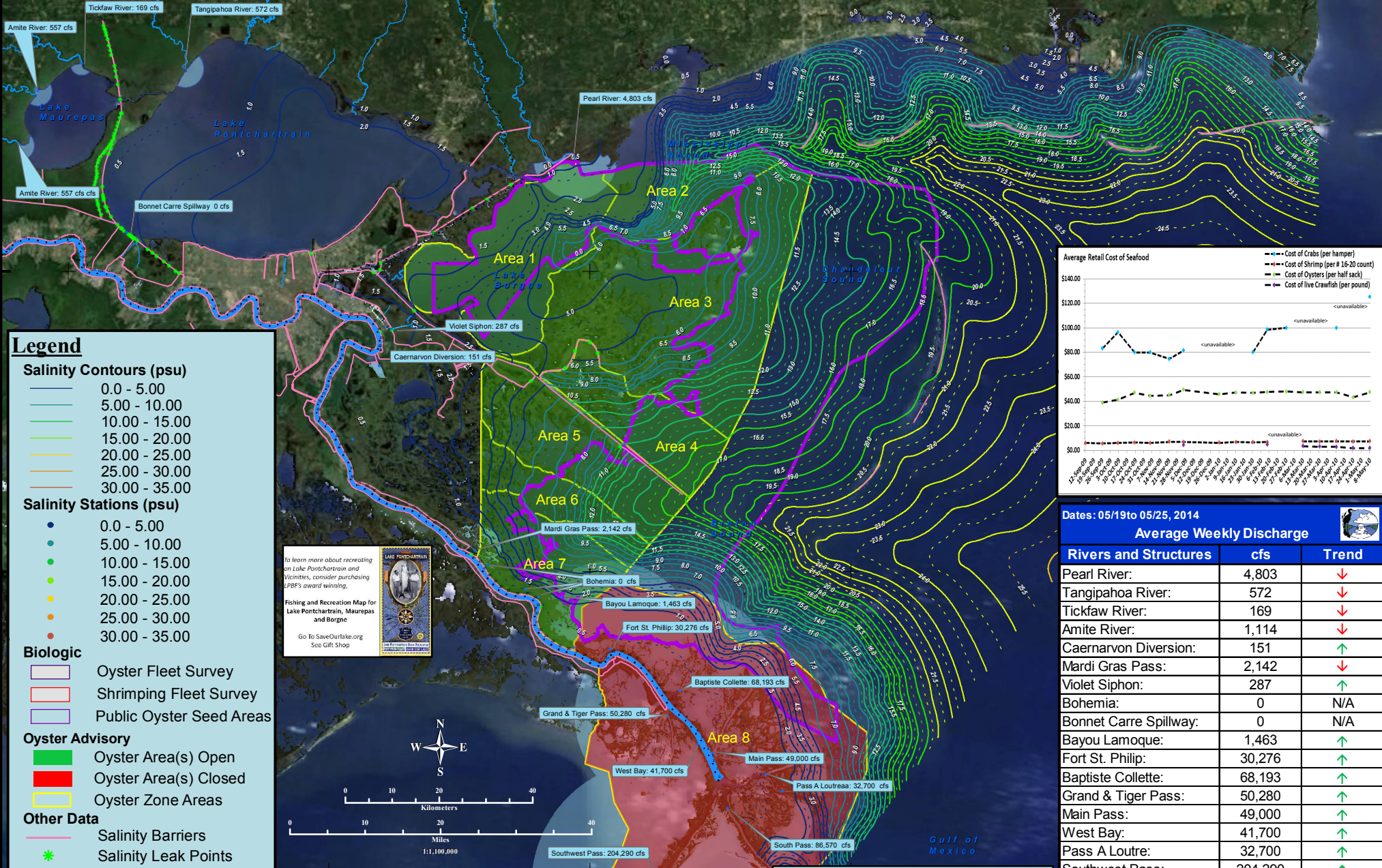
To learn more about recreating on Lake Pontchartrain and Vicinities, consider purchasing LPBF's award winning,

Fishing and Recreation Map for Lake Pontchartrain, Maurepas and Borgne

Go To SaveOurLake.org
 See Gift Shop

Hydrocoast Map - Biological

(May 19 - 25, 2014)



Legend

Salinity Contours (psu)

- 0.0 - 5.00
- 5.00 - 10.00
- 10.00 - 15.00
- 15.00 - 20.00
- 20.00 - 25.00
- 25.00 - 30.00
- 30.00 - 35.00

Salinity Stations (psu)

- 0.0 - 5.00
- 5.00 - 10.00
- 10.00 - 15.00
- 15.00 - 20.00
- 20.00 - 25.00
- 25.00 - 30.00
- 30.00 - 35.00

Biologic

- Oyster Fleet Survey
- Shrimping Fleet Survey
- Public Oyster Seed Areas

Oyster Advisory

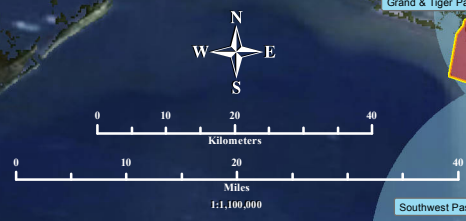
- Oyster Area(s) Open
- Oyster Area(s) Closed
- Oyster Zone Areas

Other Data

- Salinity Barriers
- Salinity Leak Points
- River Mile Markers
- Stream Discharge
- Rivers

MODIS Satellite Imagery: 05/22/2014

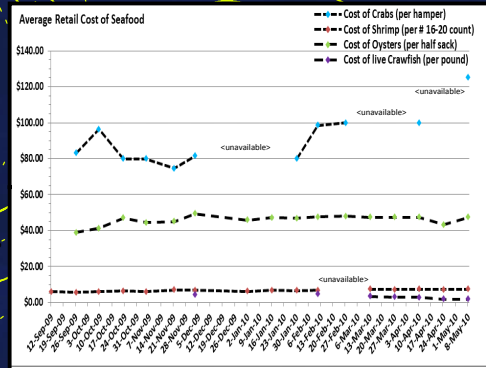
To learn more about recreating on Lake Pontchartrain and Vicinities, consider purchasing LPBF's award winning Fishing and Recreation Map for Lake Pontchartrain, Maurepas and Borgne. Go to SaveOurLake.org See Gift Shop



Information on the Lake Pontchartrain Basin Foundation - Hydrocoast Program can be found at: saveourlake.org/coastal-hydromap.php, or by calling 504-836-2215

To receive Hydrocoast map products by email, subscribe at: http://saveourlake.org/subscribe_hydromap.php

Suggested map citation:
 Connor, P.F., J. Lopez, T. Henkel, A. Moshogianis, E. Hillmann, A. Baker, D. Baker, and W. Pestoff, Hydrocoast Biological Map: May 19 - 25, 2014 [map], 1:1,100,000, Lake Pontchartrain Basin Foundation, N.O., La., 2014. <<http://saveourlake.org/coastal-hydromap-archives.php>>



Average Weekly Discharge

Rivers and Structures	cfs	Trend
Pearl River:	4,803	↓
Tangipahoa River:	572	↓
Tickfaw River:	169	↓
Amite River:	1,114	↓
Caernarvon Diversion:	151	↑
Mardi Gras Pass:	2,142	↓
Violet Siphon:	287	↑
Bohemia:	0	N/A
Bonnet Carre Spillway:	0	N/A
Bayou Lamoque:	1,463	↑
Fort St. Philip:	30,276	↑
Baptiste Collette:	68,193	↑
Grand & Tiger Pass:	50,280	↑
Main Pass:	49,000	↑
West Bay:	41,700	↑
Pass A Loutrea:	32,700	↑
Southwest Pass:	204,290	↑
South Pass:	86,570	↑

Note: Blue discharge plumes are scaled icons representing simple radial flow over a one week period to show relative amounts of discharge. The actual discharge plume will differ.